

STUD SIZE: (SSMA)	UL NUMBER	STC	12" O.C. STUD SPACING	16" O.C. STUD SPACING	STUD HEIGHT LIMITATIONS @ L/240
1.1 1-1/2" (1625125-30)	39		9'-4" OR LESS	8'-6" OR LESS	
1.2 1-5/8" (1625125-30)	N.A.	39	9'-4" OR LESS	8'-6" OR LESS	
1.3 2-1/2" (2505125-30)	N.A.	39	12'-11" OR LESS	11'-8" OR LESS	
1.4 3-5/8" (3625125-30)	N.A.	40	17'-2" OR LESS	15'-7" OR LESS	
1.5 4" (4005125-30)	N.A.	40-44	18'-7" OR LESS	16'-11" OR LESS	
1.6 6" (6005125-30)	N.A.	40-44	25'-6" OR LESS	23'-2" OR LESS	

STUD GAUGE: 20 (0.0312" MIN.)

INSULATION: DESIGNATES BATT INSULATION SAME THICKNESS AS STUD WIDTH

1 **GWB FURRING**
NO RATING

STUD SIZE: (SSMA)	UL NUMBER	STC	12" O.C. STUD SPACING	16" O.C. STUD SPACING	STUD HEIGHT LIMITATIONS @ L/240
2.1 2-1/2" (2505125-30)	N.A.	40	14'-10" OR LESS	13'-6" OR LESS	
2.2 3-5/8" (3625125-30)	N.A.	40-44	18'-0" OR LESS	16'-9" OR LESS	
2.3 4" (4005125-30)	N.A.	40-44	20'-0" OR LESS	18'-2" OR LESS	
2.4 6" (6005125-30)	N.A.	40-44	26'-9" OR LESS	24'-3" OR LESS	

STUD GAUGE: 20 (0.0312" MIN.)

INSULATION: DESIGNATES BATT INSULATION SAME THICKNESS AS STUD WIDTH

2 **GWB PARTITION**
NO RATING

STUD SIZE: (SSMA)	UL NUMBER	STC	12" O.C. STUD SPACING	16" O.C. STUD SPACING	STUD HEIGHT LIMITATIONS @ L/240
4.1 2-1/2" (2505125-30)	U411 OR U419	56	14'-10" OR LESS	13'-6" OR LESS	
4.2 3-5/8" (3625125-30)	U411 OR U419	56	18'-0" OR LESS	16'-9" OR LESS	
4.3 4" (4005125-30)	U411 OR U419	56	20'-0" OR LESS	18'-2" OR LESS	
4.4 6" (6005125-30)	U411 OR U419	56	26'-9" OR LESS	24'-3" OR LESS	

STUD GAUGE: 20 (0.0312" MIN.)

INSULATION: DESIGNATES BATT INSULATION SAME THICKNESS AS STUD WIDTH

4 **GWB PARTITION**
2 HR RATING

STUD SIZE: (SSMA)	UL NUMBER	STC	12" O.C. STUD SPACING	16" O.C. STUD SPACING	STUD HEIGHT LIMITATIONS @ L/240
5.1 3-5/8" (3625162-33)	U493	65	19'-2" OR LESS	17'-5" OR LESS	

SEALANT: YES
INSULATION: SOUND ATTENUATION BLANKETS SAME THICKNESS AS STUD WIDTH

STUD GAUGE: 20 (0.0314" MIN.)

5 **GWB PARTITION - DEMISING**
1 HR RATING (EXTRA GWB FOR ACOUSTICS)

STUD SIZE: (SSMA)	UL NUMBER	STC	12" O.C. STUD SPACING	16" O.C. STUD SPACING	STUD HEIGHT LIMITATIONS @ L/240
6.1 1-5/8" (1625125-30)	U420	52	9'-4" OR LESS	8'-6" OR LESS	
6.2 2-1/2" (2505125-30)	U420	52	12'-11" OR LESS	11'-8" OR LESS	
6.3 3-5/8" (3625125-30)	U420	52	17'-2" OR LESS	15'-7" OR LESS	

STUD GAUGE: 20 (0.0312" MIN.)

INSULATION: SOUND ATTENUATION BLANKETS SAME THICKNESS AS STUD WIDTH

6 **CHASE WALL**
1 HR RATING

STUD SIZE: (SSMA)	UL NUMBER	STC	12" O.C. STUD SPACING	16" O.C. STUD SPACING	STUD HEIGHT LIMITATIONS @ L/240
10.1 2-1/2" (2505125-30)	U438	52	13'-6" OR LESS	8'-6" OR LESS	
10.2 4" (4005125-30)	U438	52	18'-0" OR LESS	16'-9" OR LESS	
10.3 6" (6005125-30)	U438	52	24'-4" OR LESS	24'-3" OR LESS	

STUD GAUGE: 20 (0.0314" MIN.)

INSULATION: SOUND ATTENUATION BLANKETS SAME THICKNESS AS STUD WIDTH

10 **LINED SHAFT ENCLOSURE**
2 HR RATING

STUD SIZE: (SSMA)	UL NUMBER	STC	12" O.C. STUD SPACING	16" O.C. STUD SPACING	STUD HEIGHT LIMITATIONS @ L/240
17.1 1-5/8" (1625125-30)	U420	52	9'-4" OR LESS	8'-6" OR LESS	
17.2 2-1/2" (2505125-30)	U420	52	12'-11" OR LESS	11'-8" OR LESS	
17.3 3-5/8" (3625125-30)	U420	52	17'-2" OR LESS	15'-7" OR LESS	

STUD GAUGE: 20 (0.0312" MIN.)

INSULATION: SOUND ATTENUATION BLANKETS SAME THICKNESS AS STUD WIDTH

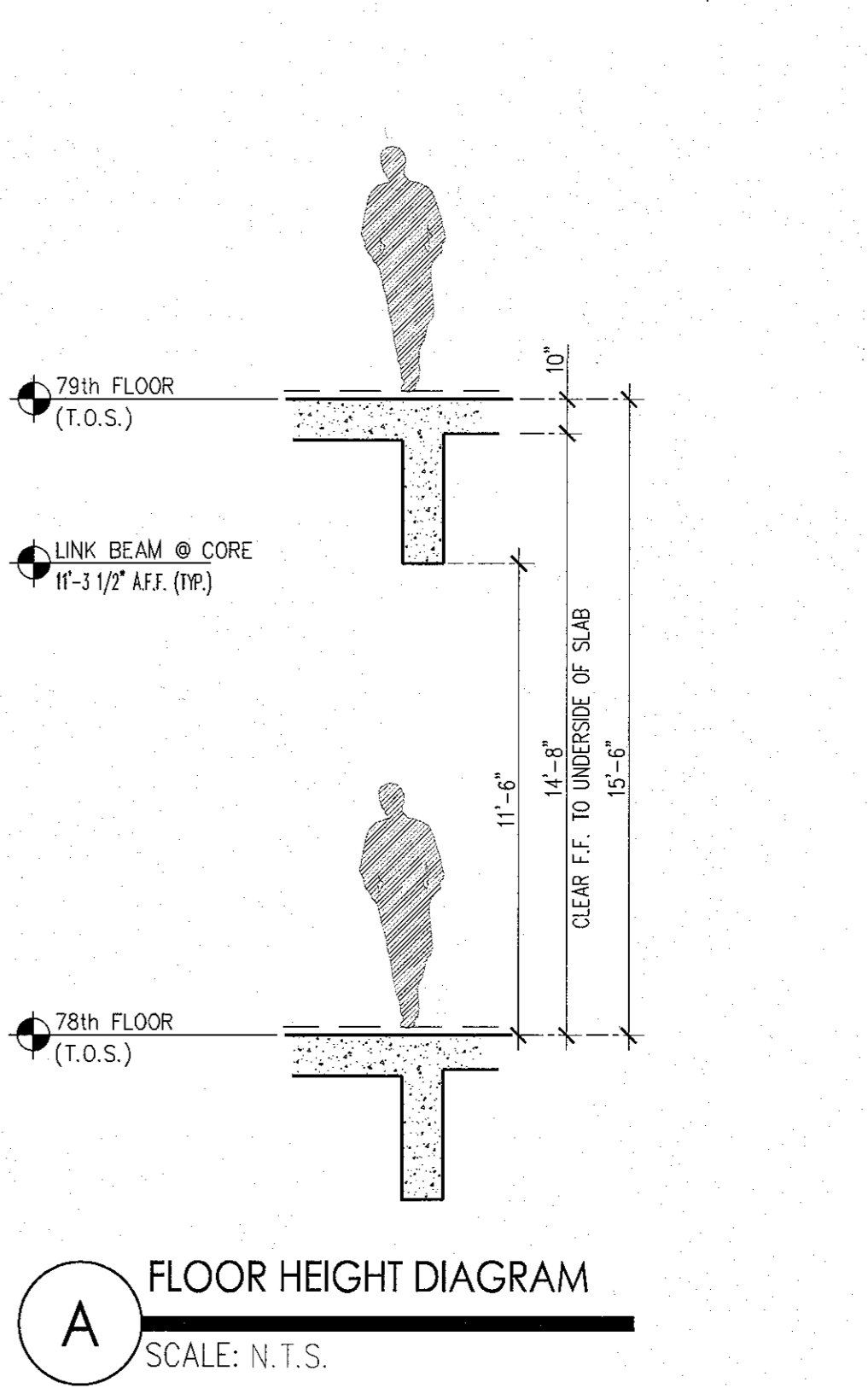
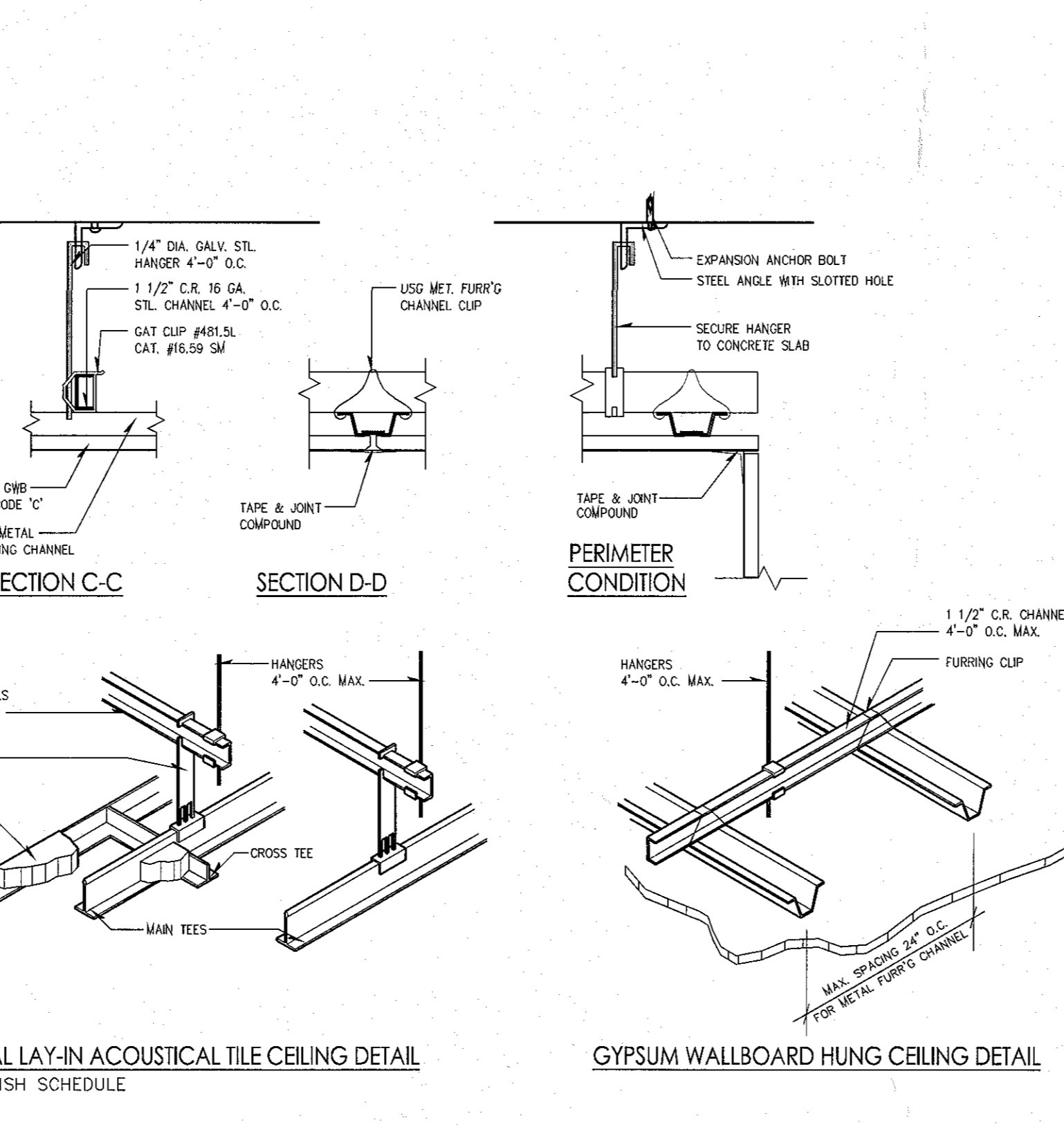
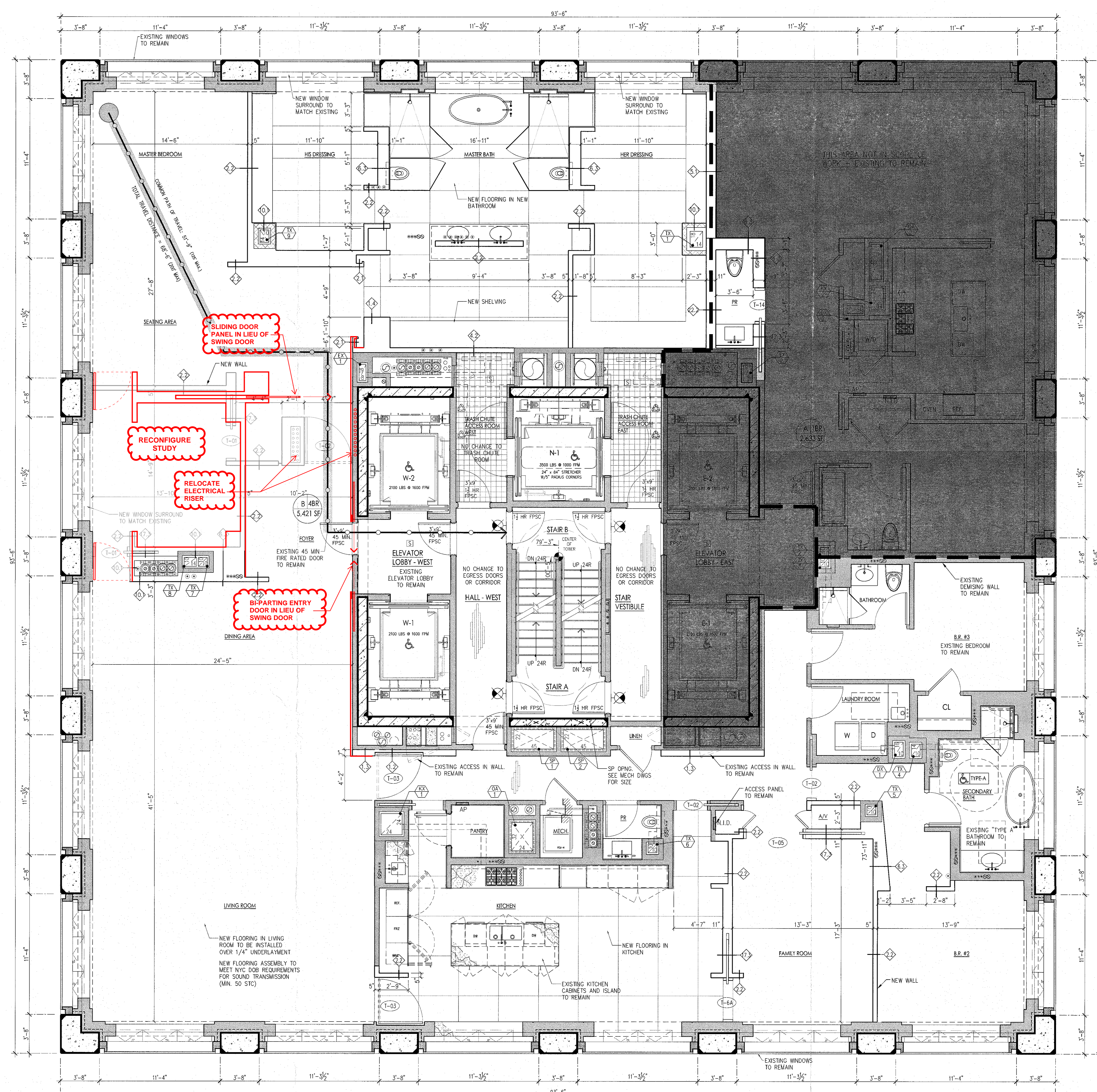
17 **WALL @ POCKET DOOR**
NO RATING

STUD SIZE: (SSMA)	UL NUMBER	STC	12" O.C. STUD SPACING	16" O.C. STUD SPACING	STUD HEIGHT LIMITATIONS @ L/240
22.1 1-5/8" (1625125-30)	U420	52	9'-4" OR LESS	8'-6" OR LESS	
22.2 2-1/2" (2505125-30)	U420	52	12'-11" OR LESS	11'-8" OR LESS	
22.3 3-5/8" (3625125-30)	U420	52	17'-2" OR LESS	15'-7" OR LESS	

STUD GAUGE: 20 (0.0312" MIN.)

INSULATION: SOUND ATTENUATION BLANKETS SAME THICKNESS AS STUD WIDTH

22 **CHASE WALL**
1 HR RATING (EXTRA GWB FOR ACOUSTICS)



PROJECT: **HM 78 A-B**

ARCHITECT OF RECORD:
S.M. BERGER ARCHITECTURE, P.C.
P.O. BOX 22213
GREAT NECK, NEW YORK 11022 TEL: 516.756.7365

EXECUTIVE ARCHITECT:
SICE ARCHITECTS, LLP
1289 BROADWAY
NEW YORK, NY 10018 TEL: 212.979.8400

STRUCTURAL ENGINEER:
WSP CANTOR SEINUK
228 EAST 43RD STREET
NEW YORK, NY 10017 TEL: 212.687.6888

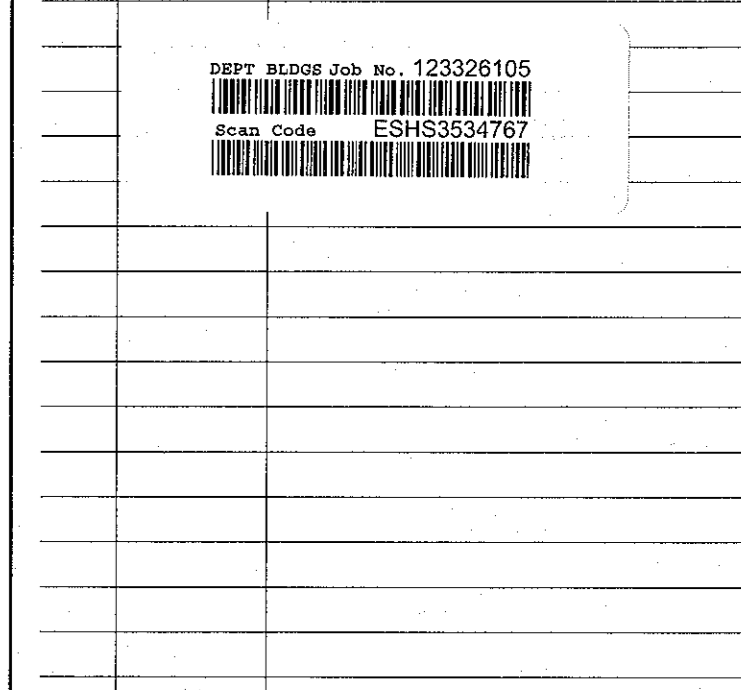
M.E.P. ENGINEER:
WSP FLACK + KURTZ
512 SEVENTH AVENUE
NEW YORK, NY 10018 TEL: 212.532.9600

CODE CONSULTANT / EXPEDIENT:
JEROMES GILLMAN CONSULTING ARCHITECTS, P.C.
40 WORTH STREET
NEW YORK, NY 10013
ZONING CONSULTANT: TEL: 212.349.9304

APARTMENT 78B: MODIFICATIONS TO PLAN SUBSEQUENT TO PERMIT DRAWING

KANGMODERN
05/21/2019

Accepted for OPN 1/04
Professional Certification
MANHATTAN
Date: **JUL 11 2017**



KEY PLAN: EAST 57TH STREET, EAST 56TH STREET, MADISON AVENUE, W 47TH STREET

DRAWING TITLE: **CONSTRUCTION PLAN 61ST FLOOR (CONST.) 78TH FLOOR (MARKETING)**

SEAL & SIGNATURE: **PROFESSIONAL ARCHITECT**

DATE: 2017.10
PROJECT NO: AR
DRAWN BY: CK
CHECKED BY: CK
DRAWING NO: A-101.00
CADD FILE NO: