

| AIR OUTLETS AND INLETS |                    |                    |                    |                    |                    |                    |  |
|------------------------|--------------------|--------------------|--------------------|--------------------|--------------------|--------------------|--|
| DESIGNATION            | SERVICE            | SPECIFICATION TYPE | MAX. GPM OR CFM/FT | FACE SIZE (INCHES) | NECK SIZE (INCHES) | SLOT SIZE (INCHES) | REMARKS                                |
| LD-A                   | SUPPLY AIR         | LINEAR DIFFUSER    | 55                 | -                  | -                  | (1) 1"             | PROVIDE 6x8 ACOUSTICALLY LINED PLENUM  |
| LD-B                   | SUPPLY AIR         | LINEAR DIFFUSER    | 68                 | -                  | -                  | (1) 1.5"           | PROVIDE 6x8 ACOUSTICALLY LINED PLENUM  |
| LD-C                   | SUPPLY AIR         | LINEAR DIFFUSER    | 80                 | -                  | -                  | (1) 2"             | PROVIDE 6x8 ACOUSTICALLY LINED PLENUM  |
| LD-D                   | SUPPLY AIR         | LINEAR DIFFUSER    | 100                | -                  | -                  | (1) 2.5"           | PROVIDE 8x10 ACOUSTICALLY LINED PLENUM |
| LD-E                   | SUPPLY AIR         | LINEAR DIFFUSER    | 140                | -                  | -                  | (1) 3"             | PROVIDE 8x12 ACOUSTICALLY LINED PLENUM |
| LD-F                   | SUPPLY AIR         | LINEAR DIFFUSER    | 180                | -                  | -                  | (2) 2"             | PROVIDE 8x12 ACOUSTICALLY LINED PLENUM |
| LR-A                   | RETURN/EXHAUST AIR | LINEAR RETURN      | -                  | -                  | -                  | (1) 1"             |  |
| LR-B                   | RETURN/EXHAUST AIR | LINEAR RETURN      | -                  | -                  | -                  | (1) 1.5"           |  |
| LR-C                   | RETURN/EXHAUST AIR | LINEAR RETURN      | -                  | -                  | -                  | (1) 2"             |  |
| LR-D                   | RETURN/EXHAUST AIR | LINEAR RETURN      | -                  | -                  | -                  | (2) 1"             |  |
| LR-E                   | RETURN/EXHAUST AIR | LINEAR RETURN      | -                  | -                  | -                  | (2) 1.5"           |  |
| LR-F                   | RETURN/EXHAUST AIR | LINEAR RETURN      | -                  | -                  | -                  | (2) 2"             |  |
| EG-A                   | RETURN/EXHAUST AIR | EXHAUST GRILLE     | 100                | 8x8                | 6x6                | -                  | 359FL                                  |

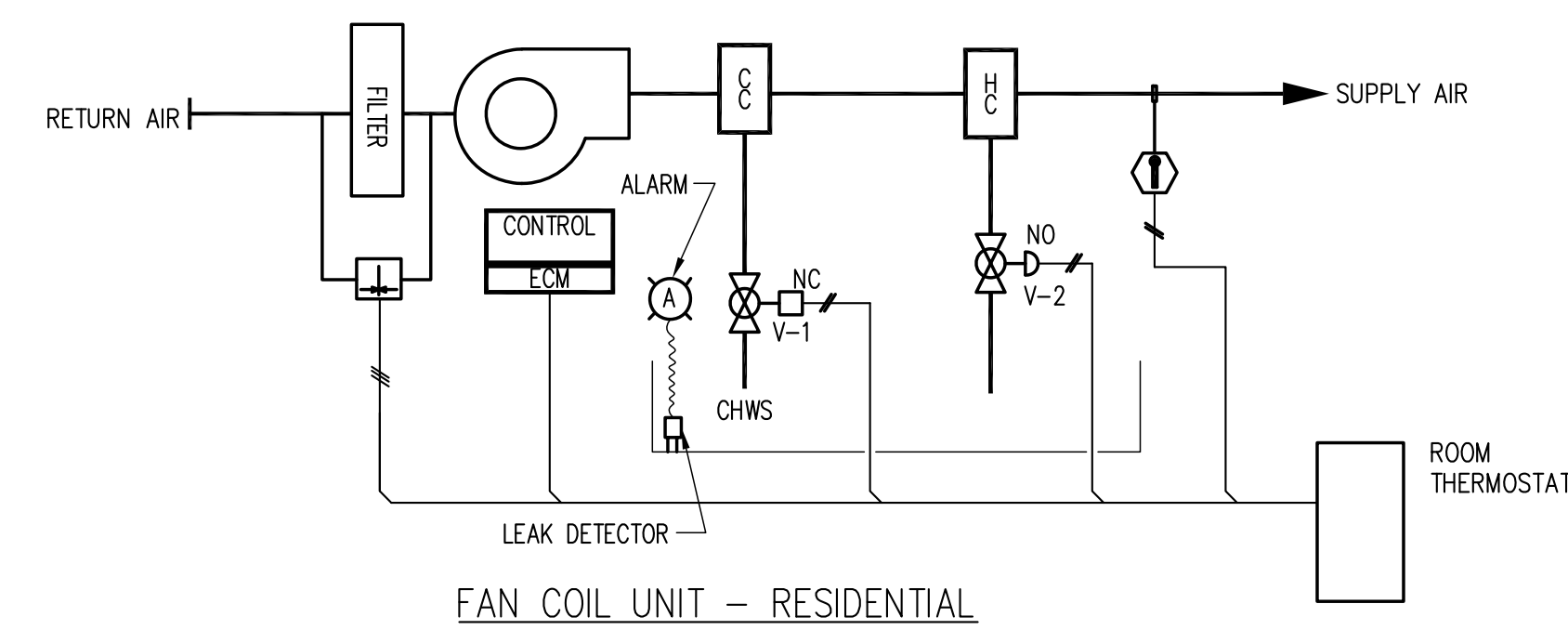
- NOTES:
- THE COLOR AND FRAME OF ALL AIR OUTLETS AND INLETS ARE TO BE SPECIFIED AND APPROVED BY THE ARCHITECT. SEE ARCHITECTURAL DRAWINGS FOR ADDITIONAL INFORMATION.
  - SEE ARCHITECTURAL DRAWINGS FOR TOTAL LENGTHS REQUIRED FOR SUPPLY AND RETURN LINEARS.
  - PROVIDE CABLE OPERATED DAMPERS FOR ALL LINEAR DIFFUSERS AND ANY VOLUME DAMPERS LOCATED ABOVE INACCESSIBLE CEILINGS.
  - ALL RESIDENTIAL TOILET EXHAUST GRILLES SHALL BE PROVIDED WITH INTEGRATED SELF-BALANCING DAMPER AS MANUFACTURED BY ALDES OR APPROVED EQUAL.
  - ALL UNDUCTED LINEAR RETURN DIFFUSERS TO BE PROVIDED WITH LIGHT SHIELD PAINTED BLACK.
  - ALL LINEAR DIFFUSERS BORDER SHALL BE TAPED, SPARKLED AND PAINTED TO MATCH CEILING.

| FAN COIL UNITS (INTERNATIONAL ENVIRONMENTAL AS STD) |                   |                                   |                                     |                                    |                                    |                                    |                                    |                                    |  |                           |                           |                           |                           |                       |                    |                |                     |                    |              |               |           |                 |
|---|-------------------|-----------------------------------|-------------------------------------|------------------------------------|------------------------------------|------------------------------------|------------------------------------|------------------------------------|--|---------------------------|---------------------------|---------------------------|---------------------------|-----------------------|--------------------|----------------|---------------------|--------------------|--------------|---------------|-----------|-----------------|
| DESIGNATION   | NO. QUANTITY (CM) | EXTERNAL STATIC (INCHES OF WATER) | COOLING COIL DATA AT 76 DEG. E.A.T. |                                    |                                    |                                    |                                    |                                    | HOT WATER HEATING COIL AT 70 DEG. E.A.T. |                           |                           |                           |                           |                       | FAN MOTOR DATA     |                | VIBRATION ISOLATION |                    | MODEL NUMBER | MANUF.        | REMARKS   |                 |
|   |                   |                                   | WATER FLOW RATE (GPM)               | ENT. WATER TEMPERATURE (DEGREES F) | LVG. WATER TEMPERATURE (DEGREES F) | LVG. WATER TEMPERATURE (DEGREES F) | LVG. WATER TEMPERATURE (DEGREES F) | LVG. WATER TEMPERATURE (DEGREES F) | WATER FLOW RATE (GPM)                    | ENT. WATER TEMP. (DEG. F) | LVG. WATER TEMP. (DEG. F) | LVG. WATER TEMP. (DEG. F) | LVG. WATER TEMP. (DEG. F) | WATER FLOW RATE (GPM) | PRESSURE DROP (FT) | MINIMUM FAN HP | VOLTS/PHASE         | SPECIFICATION TYPE |              |               |           | STATUS (INCHES) |
| A   | 350               | 0.3                               | 1.42                                | 42                                 | 56                                 | 54.2                               | 9.9                                | 8.4                                | 0.2                                      | 16.5                      | 200                       | 180                       | 113.2                     | 1.65                  | 2.3                | 1/10           | 115/1               | NH                 | 1/4          | HPY06         | INT. ENV. | -               |
| B   | 540               | 0.3                               | 2.3                                 | 42                                 | 56                                 | 53.4                               | 16.4                               | 13.4                               | 0.7                                      | 25.6                      | 200                       | 180                       | 113.4                     | 2.56                  | 6.8                | 1/8            | 115/1               | NH                 | 1/4          | HPY08         | INT. ENV. | -               |
| C   | 680               | 0.3                               | 2.9                                 | 42                                 | 56                                 | 53.7                               | 20.1                               | 16.6                               | 1.1                                      | 30.6                      | 200                       | 180                       | 111.2                     | 3.1                   | 9.7                | 1/8            | 115/1               | NH                 | 1/4          | HPY08         | INT. ENV. | -               |
| D   | 1180              | 0.3                               | 5.07                                | 42                                 | 56                                 | 53.4                               | 35.5                               | 28.8                               | 1.5                                      | 52.0                      | 200                       | 180                       | 110.8                     | 5.2                   | 5.1                | (2)1/10        | 115/1               | NH                 | 1/4          | HPY14         | INT. ENV. | -               |
| E   | 1350              | 0.3                               | 5.7                                 | 42                                 | 56                                 | 53.8                               | 39.9                               | 32.8                               | 1.87                                     | 56.8                      | 200                       | 180                       | 108.4                     | 5.68                  | 6.05               | (2)1/10        | 115/1               | NH                 | 1/4          | HPY14         | INT. ENV. | -               |
| F   | 1500              | 0.3                               | 6.7                                 | 42                                 | 56                                 | 53.2                               | 46.6                               | 37.4                               | 2.8                                      | 64.3                      | 200                       | 180                       | 109.2                     | 6.4                   | 8.7                | 1/2            | 115/1               | NH                 | 1/4          | VBA16         | INT. ENV. | VERTICAL        |
| G   | 1445              | 0.3                               | 7.1                                 | 42                                 | 56                                 | 51.8                               | 49.7                               | 38.2                               | 3.8                                      | 67.7                      | 200                       | 180                       | 112.8                     | 6.77                  | 11.5               | (2)1/4         | 115/1               | NH                 | 1/4          | HPY20         | INT. ENV. | -               |
| H   | 2250              | 0.3                               | 10                                  | 42                                 | 56                                 | 53.5                               | 64.9                               | 54.5                               | 0.9                                      | 94.9                      | 200                       | 180                       | 109                       | 9                     | 0.3                | 4              | 208/1               | NH                 | 1/4          | V3CRB9028FA   | AAON      | VERTICAL        |
| I   | 865               | 0.3                               | 3                                   | 42                                 | 56                                 | 56.6                               | 20.7                               | 18.3                               | 1.0                                      | 40.8                      | 200                       | 180                       | 113.2                     | 4.1                   | 22.6               | (2)1/10        | 115/1               | NH                 | 1/4          | HPY12         | INT. ENV. | -               |
| J   | 1620              | 0.3                               | 5.4                                 | 42                                 | 56                                 | 56.7                               | 37.8                               | 35.6                               | .63                                      | 53.9                      | 200                       | 180                       | 100.8                     | 5.6                   | 0.3                | 1              | 115/1               | NH                 | 1/4          | V3BRA9028FA11 | AAON      | VERTICAL        |
| K   | 1800              | 0.3                               | 5.7                                 | 42                                 | 56                                 | 57.24                              | 40.12                              | 38.73                              | 0.71                                     | 57.8                      | 200                       | 180                       | 99.8                      | 6                     | 0.4                | 1              | 115/1               | NH                 | 1/4          | V3BRA9028FA11 | AAON      | VERTICAL        |
| L   | 725               | 0.3                               | 3.3                                 | 42                                 | 56                                 | 52.7                               | 23.2                               | 18.5                               | 1.7                                      | 33.9                      | 200                       | 180                       | 112.8                     | 3.4                   | 13.6               | 1/5            | 115/1               | NH                 | 1/4          | HPY10         | INT. ENV. | -               |
| -   | -                 | -                                 | -                                   | -                                  | -                                  | -                                  | -                                  | -                                  | -  | -                         | -                         | -                         | -                         | -                     | -                  | -              | -                   | -                  | -            | -             | -         | -               |

- NOTES:
- ALL DIRECT DRIVE FAN COIL UNITS TO BE PROVIDED WITH ECM MOTORS.
  - FAN COIL UNITS TO BE PROVIDED WITH LOW STATIC (0.2") MERV 13 FILTERS AND ASSOCIATED FILTER RACK AS REQUIRED.
  - SEE SPECS AND DETAILS FOR VIBRATION ISOLATOR TYPE.

| ELECTRIC HEATING MATS (NUHEAT AS STD) |                     |      |      |       |              |         |
|---------------------------------------|---------------------|------|------|-------|--------------|---------|
| DESIGNATION                           | DIMENSIONS (INCHES) | OHMS | AMPS | WATTS | MODEL NUMBER | REMARKS |
| EHM-A                                 | 40x27               | 160  | 0.8  | 90    | F1006        |         |
| EHM-B                                 | 48x24               | 150  | 0.8  | 96    | F1206        |         |
| EHM-C                                 | 48x48               | 75   | 1.6  | 192   | F1212        |         |
| EHM-D                                 | 60x60               | 48   | 2.5  | 300   | F1515        |         |
| EHM-E                                 | 72x42               | 57   | 2.1  | 252   | F1810        |         |
| EHM-F                                 | 72x48               | 50   | 2.4  | 288   | F1812        |         |
| EHM-G                                 | 72x60               | 40   | 3.0  | 360   | F1815        |         |
| EHM-H                                 | 72x72               | 33   | 3.6  | 432   | F1818        |         |
| EHM-I                                 | 84x60               | 34   | 3.5  | 420   | F2115        |         |
| EHM-J                                 | 108x60              | 27   | 4.5  | 540   | F2121        |         |
| EHM-K                                 | 118x48              | 31   | 3.9  | 472   | F3012        |         |
| EHM-L                                 | 118x60              | 24   | 4.9  | 590   | F3015        |         |
| EHM-M                                 | 118x72              | 20   | 5.9  | 708   | F3018        |         |
| EHM-N                                 | 48x40               | 90   | 1.3  | 160   | F1012        |         |
| EHM-P                                 | 84x84               | 25   | 4.9  | 588   | F2121        |         |
| EHM-Q                                 | 60x48               | 60   | 2.0  | 240   | F1512        |         |
| EHM-R                                 | 60x40               | 108  | 1.1  | 133   | F1010        |         |
| EHM-S                                 | 48x36               | 100  | 1.2  | 144   | F1209        |         |
| EHM-T                                 | 96x48               | 38   | 3.2  | 384   | F2512        |         |
| EHM-U                                 | 84x36               | 57   | 2.1  | 252   | F2109        |         |
| EHM-V                                 | 72x30               | 80   | 1.5  | 180   | F1808        |         |
| EHM-W                                 | 48x30               | 120  | 1.0  | 120   | F1208        |         |
| EHM-X                                 | 118x36              | 41   | 3.0  | 354   | F3009        |         |
| EHM-Y                                 | 108x36              | 44   | 2.7  | 324   | F2709        |         |
| EHM-Z                                 | 84x30               | 69   | 1.8  | 210   | F2108        |         |
| EHM-AA                                | 84x48               | 43   | 2.8  | 336   | F2112        |         |

- NOTES:
- TO BE FURNISHED AND INSTALLED BY ELECTRICAL CONTRACTOR.
  - ELECTRIC HEATING MAT SCHEDULE FOR REFERENCE ONLY.



A. Fan Coil Units - Residential

- The residential Fan Coil Units shall be controlled as follows:
  - When the space temperature setpoint is satisfied, the heating coil control valve and the cooling coil control valve will be closed, the supply fan shall be operating at minimum speed.
  - If the space temperature drops below setpoint, control valve V-2 shall modulate to maintain a fixed 84 degrees discharge. The supply fan speed shall modulate to bring the space back to setpoint.
  - If the space temperature rises above setpoint, the two position (2) cooling coil control valve V-1 will open. The supply fan speed shall modulate to bring the space back to setpoint.
  - The space thermostat shall be Aleron VLD model.
  - Provide a leak detector in the drip pan of the FCU that will shut down the unit and with a locally mounted "Silent" audible alarm device to sound when water is detected. Provide 4"x4" box with a lamacool cover. Covers shall be red with white letters, and smaller alarm centered in the cover with a silencer switch. The cover shall engraved as follows, "When this alarm is energized, water has been detected in unit. Call building maintenance immediately."

PROJECT:

HM 78 A-B

ARCHITECT OF RECORD:

S.M. BERGER ARCHITECTURE, P.C.  
P.O. BOX 222113  
GREAT NECK, NEW YORK 11022 TEL.: 516. 773. 7365

EXECUTIVE ARCHITECT:

SLCE ARCHITECTS, LLP  
1309 BROADWAY  
NEW YORK, NY 10018 TEL.: 212. 979. 8400

STRUCTURAL ENGINEER:

WSP CANTOR SENUK  
228 EAST 43TH STREET  
NEW YORK, NY 10017 TEL.: 212. 687. 9888

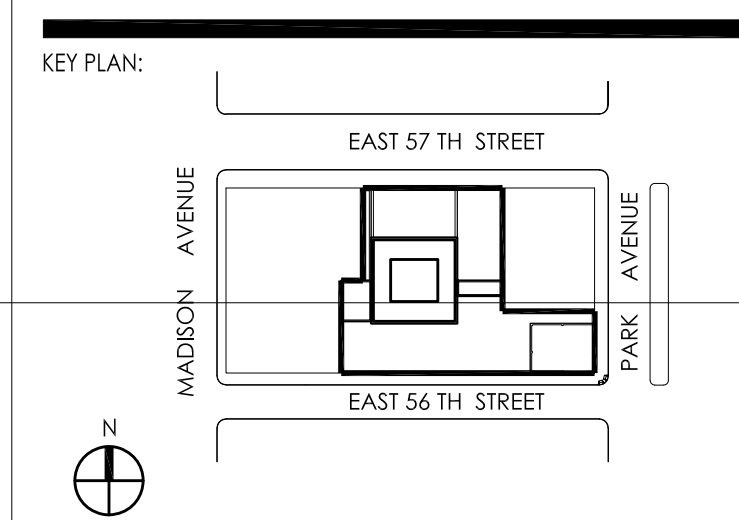
M/E ENGINEER:

WSP FLACK + KURTZ  
512 EDVESH AVENUE  
NEW YORK, NY 10018 TEL.: 212. 532. 9600

CODE CONSULTANT / EXPEDITING:

JEROME S. GILLMAN CONSULTING ARCHITECTS, P.C.  
40 WORTH STREET  
NEW YORK, NY 10013 TEL.: 212. 349. 9304

06/09/2017 ISSUED FOR DOB  
No: \_\_\_\_\_ Date: \_\_\_\_\_ Revision: \_\_\_\_\_  
SCALE: NTS



DRAWING TITLE:  
MECHANICAL SCHEDULE & CONTROLS SHEET

SEAL & SIGNATURE: \_\_\_\_\_ DATE: \_\_\_\_\_  
PROJECT No: \_\_\_\_\_ DRAWN BY: DD  
CHECKED BY: DD  
DRAWING No: \_\_\_\_\_  
M-600.00  
CADD FILE No: \_\_\_\_\_  
M-600