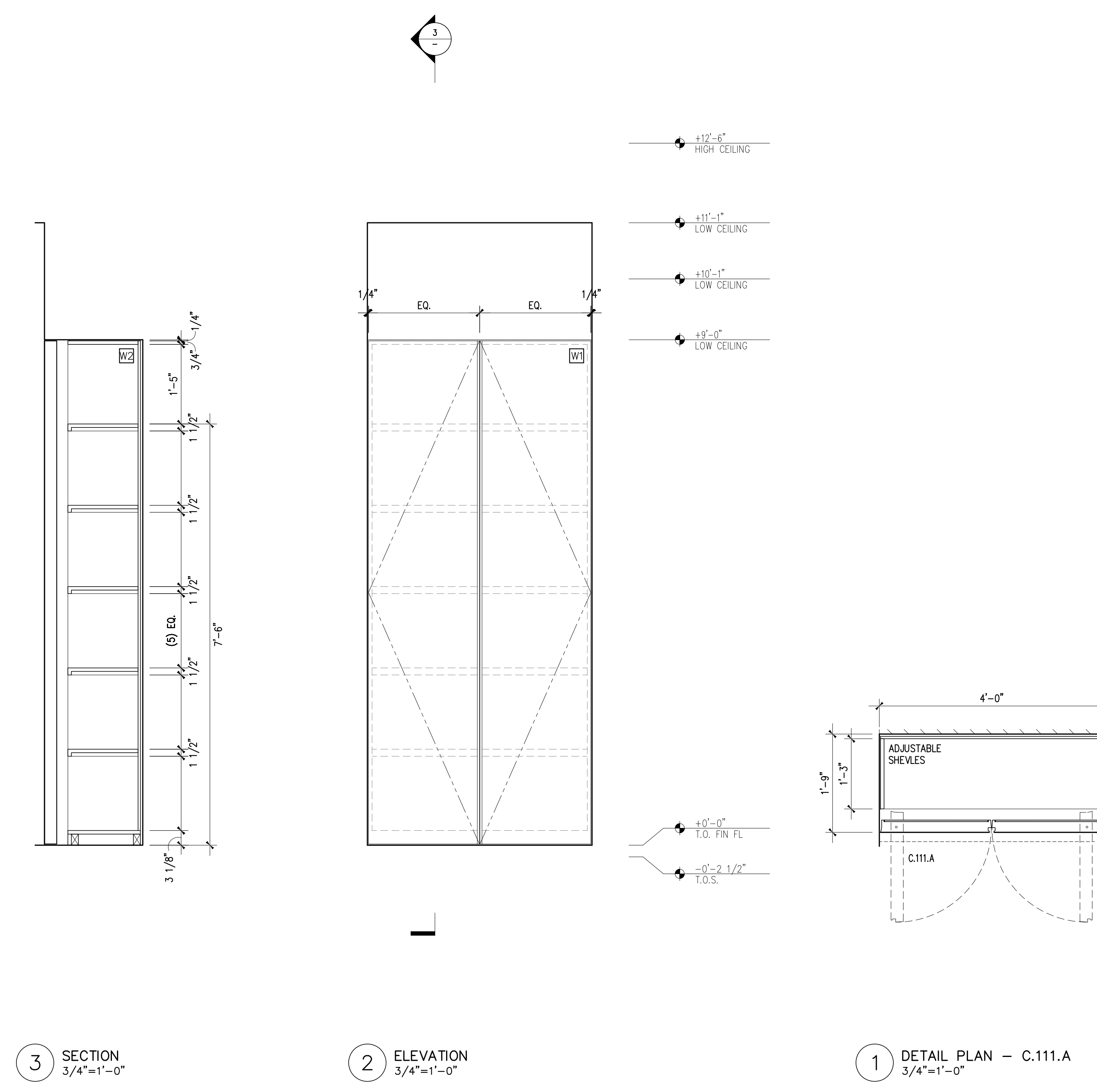
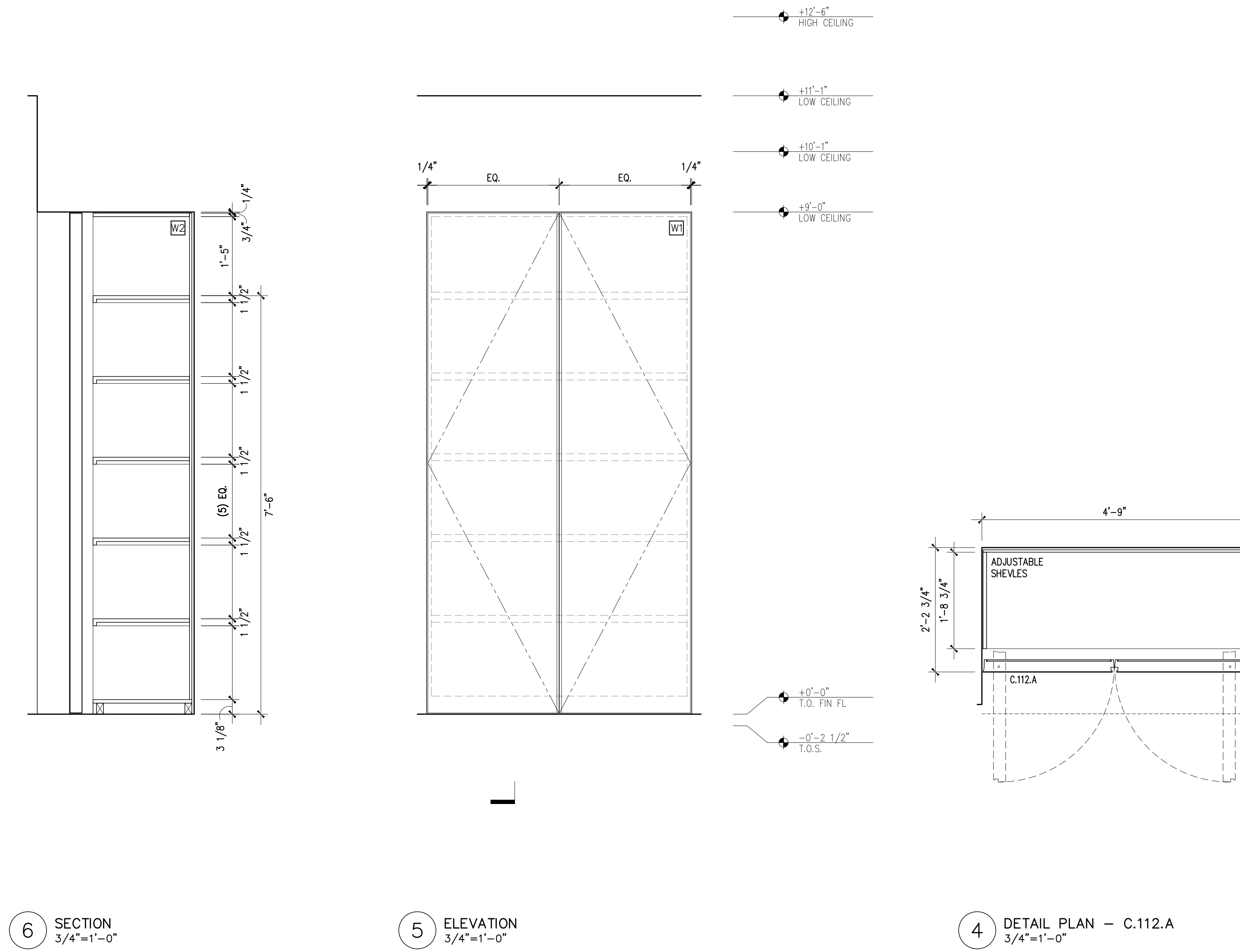


LEGEND

- SYCAMORE VENEER & EDGING
- SYCAMORE VENEER & EDGING
- SUPER WHITE STONE
- BIANCO NEVE STONE
- CLEAR ANODIZED ETCHED ALUMINUM
- CLEAR, LOW IRON GLASS
- CLEAR, LOW IRON MIRROR
- VENETIAN PLASTER

GENERAL NOTES

- UNLESS OTHERWISE NOTED, THE SPECIFICATION FOR SURFACE MOUNTED CABINET PULLS ARE TO BE DETERMINED
- ALUM. GRILLS AT CABINET BASES TO BE 1/8" x 1/8" SPACE CONTINUOUS ANODIZED WITH CONCEALED FASTENING.

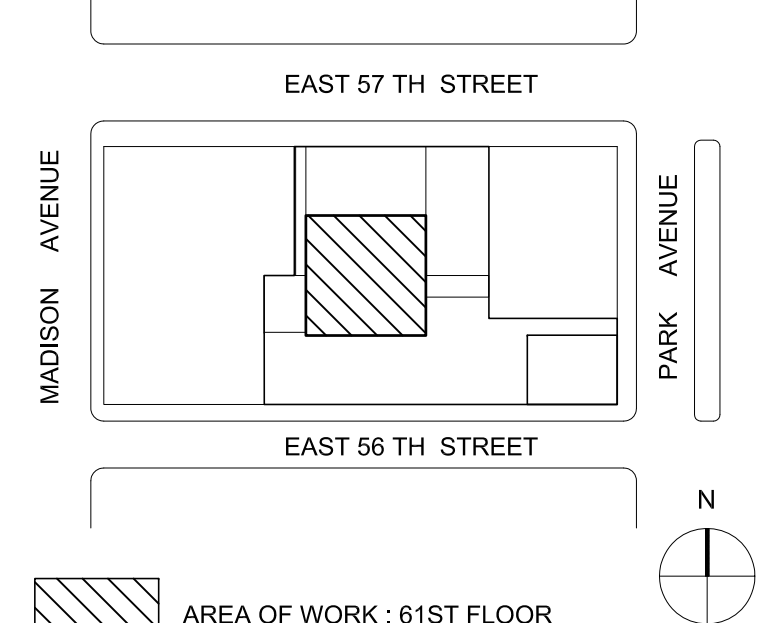


04 AUG 2017 FOR PRICING

No. Date Issues/Revisions

432 PARK, APT. 78B
432 PARK AVENUE, 61ST FLOOR NEW YORK, NY 10022

KEY PLAN:



KANG MODERN

NEW YORK office
304 Hudson Street, Suite 500
New York, NY 10013
T 212.462.2028
F 212.462.4788

WSP Flack & Kurtz
412 Seventh Avenue
New York, NY 10018
HDL.C. Architectural Lighting design
10 East 39th Street, 5th Floor
New York, NY 10016

M/E/P Engineers
Tel: (212) 535-9600
Lighting Designers
Tel: (212) 539-7600

CLOSET PLANS, ELEVATIONS, & SECTIONS

Scale: 3/4"=1'-0"
Date: 25 JAN 2017