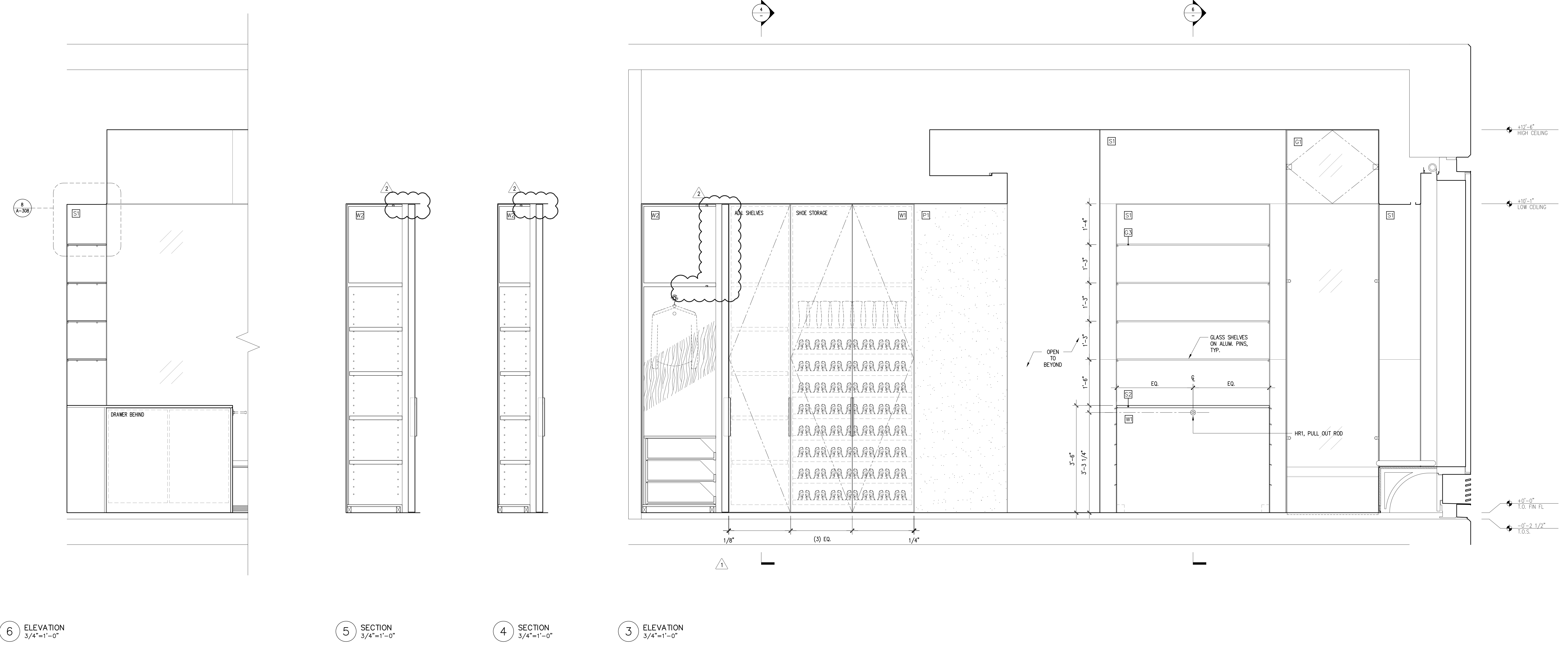


**LEGEND**

- W1 SYCAMORE VENEER & EDGING
- W2 SYCAMORE VENEER & EDGING
- S1 SUPER WHITE STONE
- S2 BIANCO NEVE STONE
- M1 CLEAR ANODIZED ETCHED ALUMINUM
- G1 CLEAR, LOW IRON GLASS
- R1 CLEAR, LOW IRON MIRROR
- P1 VENETIAN PLASTER

**GENERAL NOTES**

1. CABINET PULLS ARE TO BE CUSTOM EDGE PULLS AS SHOWN ON DRAWINGS. ALUMINUM FINISH TO MATCH PROJECT STANDARD.
2. ALUM. GRILLS AT CABINET BASES TO BE 1/8" x 1/8" SPACE CONTINUOUS ANODIZED WITH CONCEALED FASTENING.

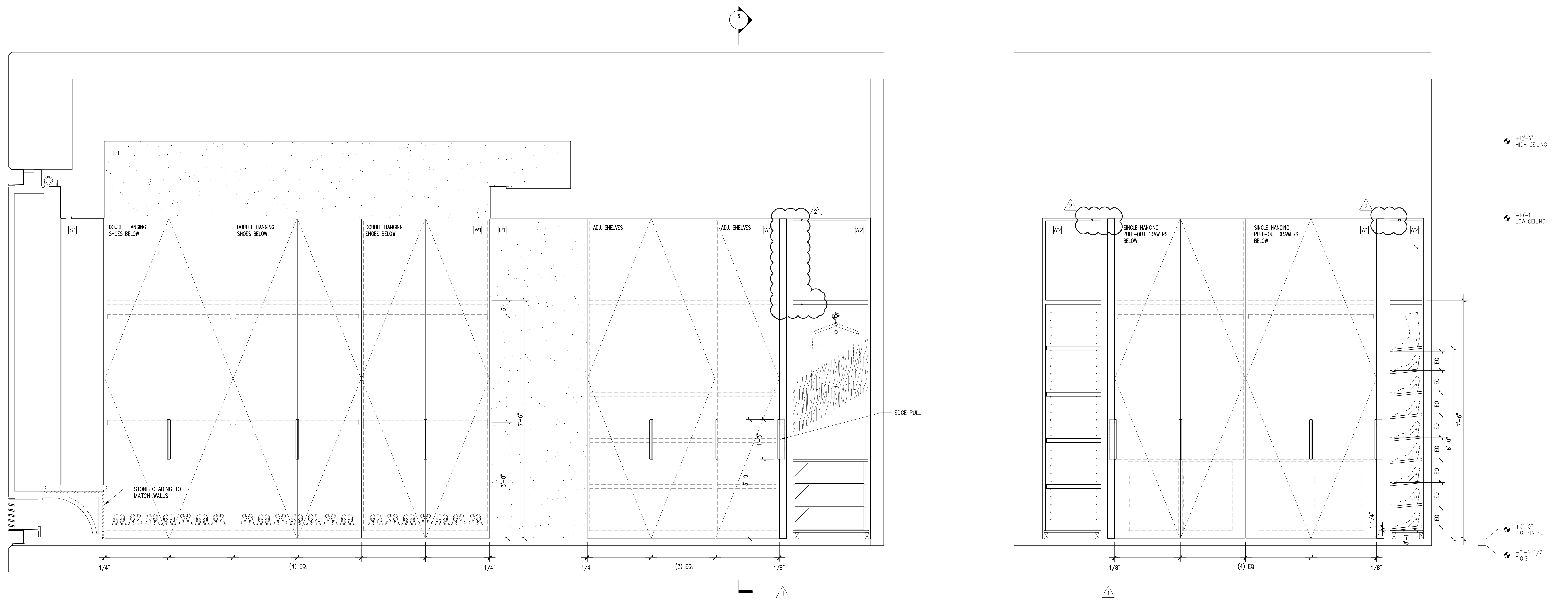


6 ELEVATION  
3/4"=1'-0"

5 SECTION  
3/4"=1'-0"

4 SECTION  
3/4"=1'-0"

3 ELEVATION  
3/4"=1'-0"

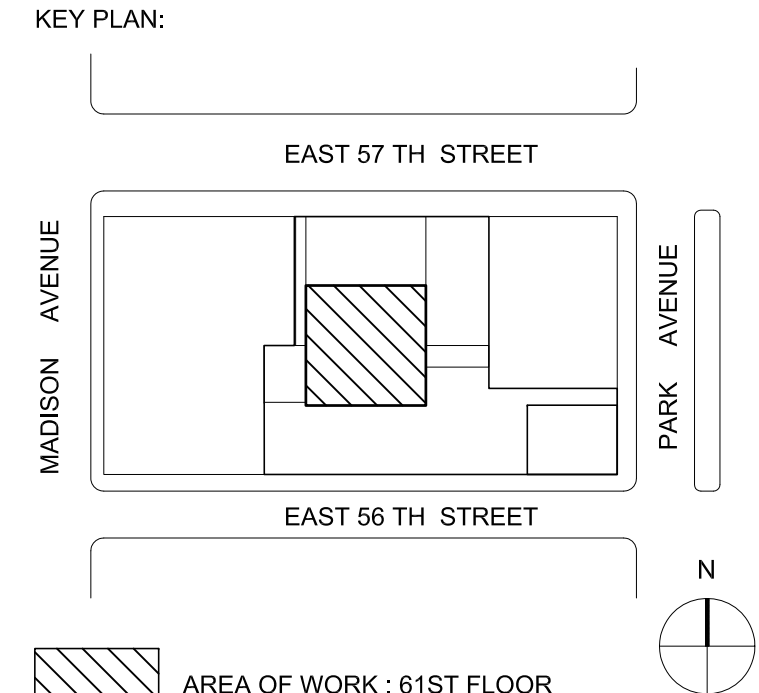


2 ELEVATION  
3/4"=1'-0"

1 ELEVATION  
3/4"=1'-0"

No.	Date	Issues/Revisions
26	JAN 2017	REVISIONS AS BUBBLED
15	NOV 2017	REVISIONS AS BUBBLED
03	OCT 2017	CABINET PULLS REVISED
04	AUG 2017	ISSUE FOR COORDINATION FOR PRICING

**432 PARK, APT. 78B**  
432 PARK AVENUE, 61ST FLOOR NEW YORK, NY 10022



**KANG MODERN**  
architect + interior design  
NEW YORK OFFICE  
304 Hudson Street, Suite 500  
New York, NY 10013  
T 212.462.2028  
F 212.462.4788

M.E.P. Engineers  
Tel: (212) 535-9600

WSP Flack & Kurtz  
312 Seventh Avenue  
New York, NY 10018

JDL.C. Architectural Lighting design  
10 East 38th Street, 5th Floor  
New York, NY 10016

Lighting Designers  
Tel: (212) 536-7800

**MASTER BATH AND MASTER DRESSING RM. ELEVATIONS**

18248 SHEETS - SCALE IS FINAL WORKING SCALE  
 18249 SHEETS - SCALE IS 1/2"=1'-0" WORKING SCALE  
 18250 SHEETS - SCALE IS 1/2"=1'-0" WORKING SCALE  
 18251 SHEETS - INTS