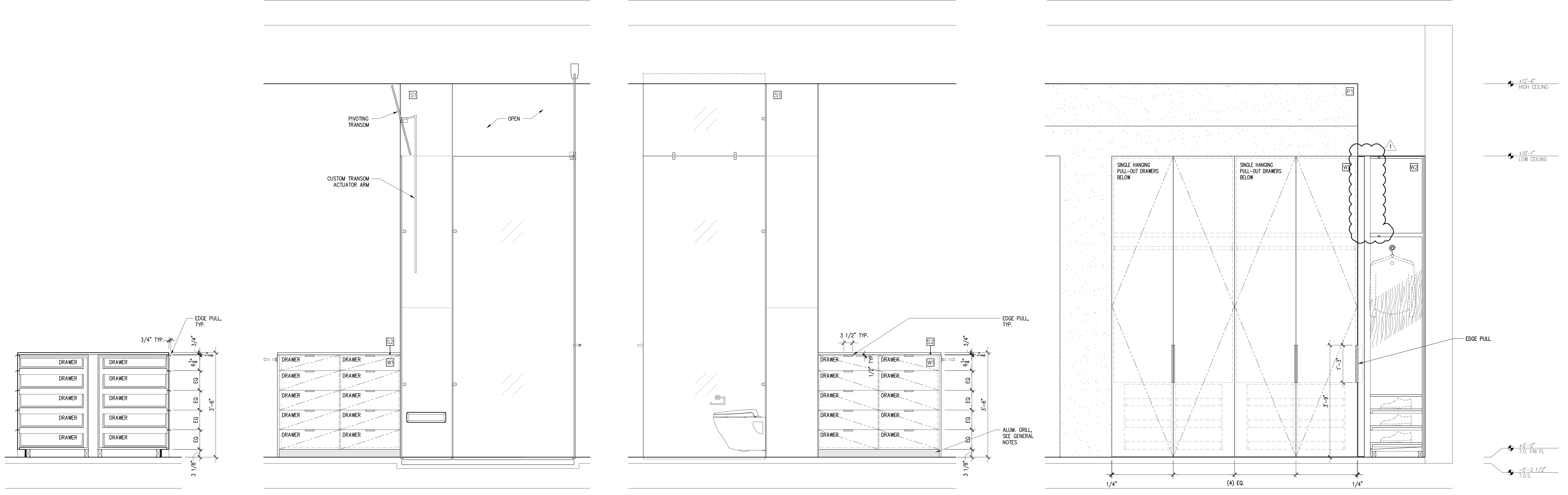


**LEGEND**

- W1 SYCAMORE VENEER & EDGING
- W2 SYCAMORE VENEER & EDGING
- S1 SUPER WHITE STONE
- S2 BIANCO NEVE STONE
- M1 CLEAR ANODIZED ETCHED ALUMINUM
- G1 CLEAR, LOW IRON GLASS
- G2 CLEAR, LOW IRON MIRROR
- P1 VENETIAN PLASTER

**GENERAL NOTES**

1. CABINET PULLS ARE TO BE CUSTOM EDGE PULLS AS SHOWN ON DRAWINGS. ALUMINUM FINISH TO MATCH PROJECT STANDARD.
2. ALUM. GRILLS AT CABINET BASES TO BE 1/8" x 1/8" SPACE CONTINUOUS ANODIZED WITH CONCEALED FASTENING.

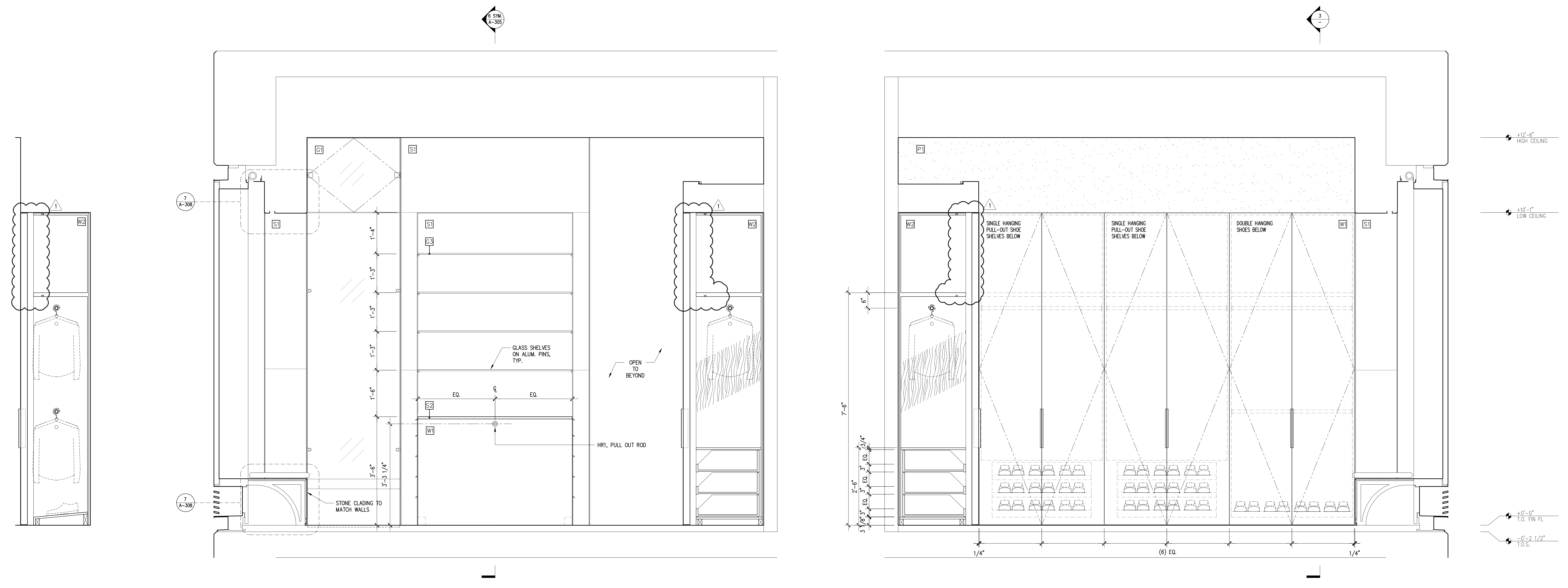


7 SECTION  
3/4"=1'-0"

6 ELEVATION  
3/4"=1'-0"

5 ELEVATION  
3/4"=1'-0"

4 ELEVATION  
3/4"=1'-0"



3 SECTION  
3/4"=1'-0"

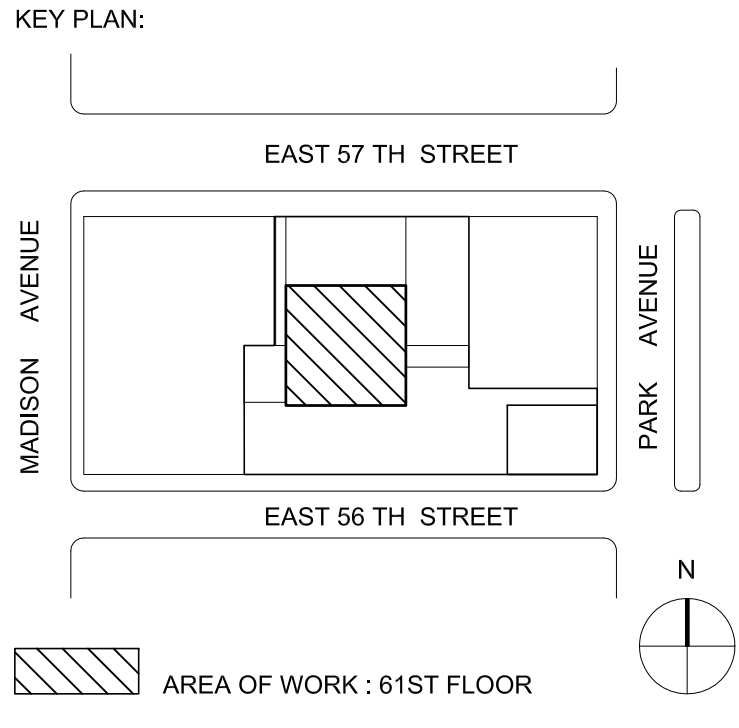
2 ELEVATION  
3/4"=1'-0"

1 ELEVATION  
3/4"=1'-0"

- 28 JAN 2017 REVISIONS AS BUBBLED
- 15 NOV 2017 CABINET PULLS REVISED
- 03 OCT 2017 ISSUE FOR COORDINATION
- 04 AUG 2017 FOR PRICING

No. Date Issues/Revisions

**432 PARK, APT. 78B**  
432 PARK AVENUE, 61ST FLOOR NEW YORK, NY 10022



**KANG MODERN**  
architects + interior architects  
NEW YORK office  
304 Hudson Street, Suite 500  
New York, NY 10013  
T 212.462.2028  
F 212.462.4788  
WSP Flack & Kurtz  
312 Seventh Avenue  
New York, NY 10018  
HDL.C. Architectural Lighting design  
10 East 38th Street, 5th Floor  
New York, NY 10016  
M/E/P Engineers  
Tel: (212) 535-9600  
Lighting Designers  
Tel: (212) 536-7800

18049 SHEETS - SCALE IS FINAL WORKING SCALE  
 18024 SHEETS - SCALE IS 1/2"=1'-0" WORKING SCALE  
 18037 SHEETS - INTS