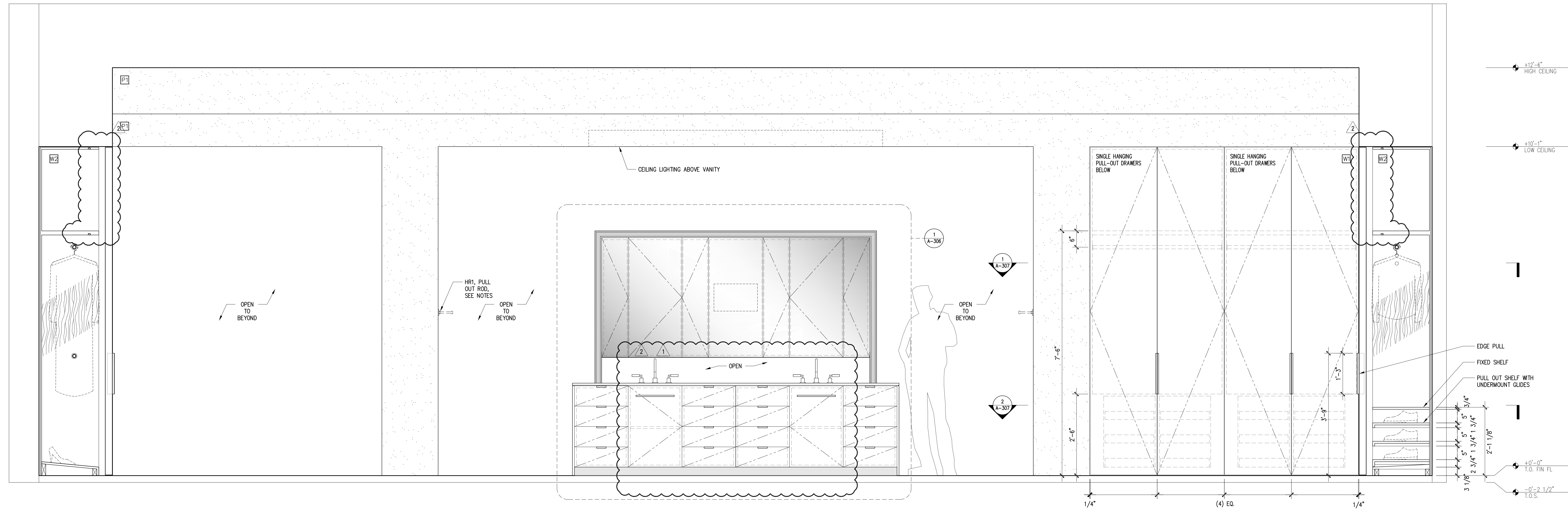


**LEGEND**

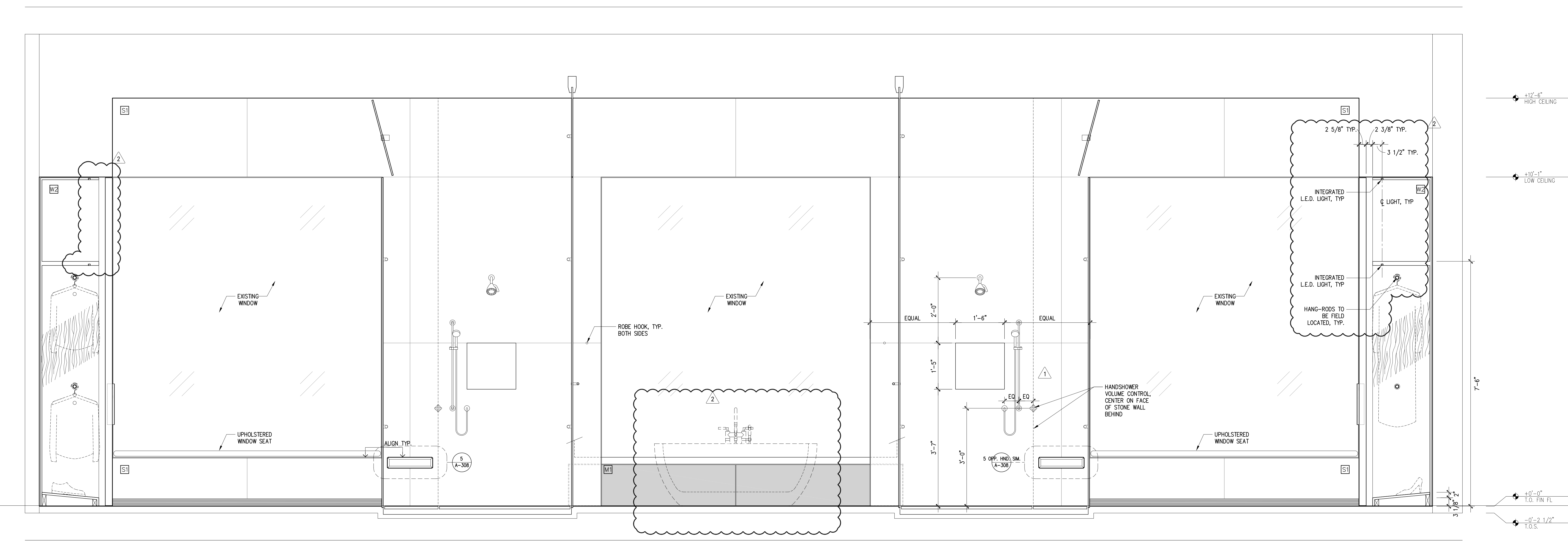
- M1 SYCAMORE VENEER & EDGING
- M2 SYCAMORE VENEER & EDGING
- S1 SUPER WHITE STONE
- S2 BIANCO NEVE STONE
- M3 CLEAR ANODIZED ETCHED ALUMINUM
- G1 CLEAR, LOW IRON GLASS
- G2 CLEAR, LOW IRON MIRROR
- P1 VENETIAN PLASTER

**GENERAL NOTES**

1. CABINET PULLS ARE TO BE CUSTOM EDGE PULLS AS SHOWN ON DRAWINGS. ALUMINUM FINISH TO MATCH PROJECT STANDARD.
2. ALUM GRILLS AT CABINET BASES TO BE 1/8" x 1/8" SPACE CONTINUOUS ANODIZED WITH CONCEALED FASTENING.



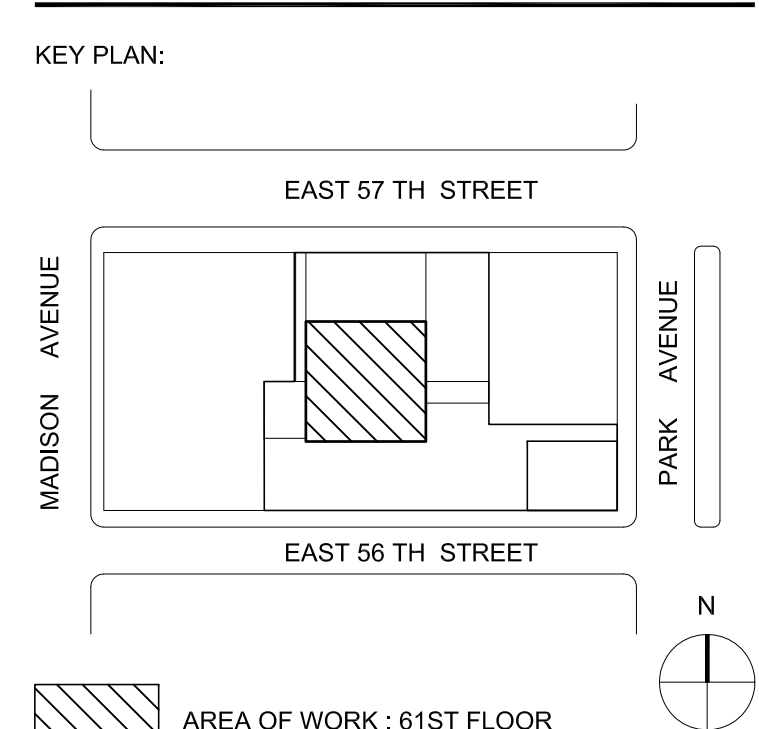
**2** ELEVATION  
3/4"=1'-0"



**1** ELEVATION  
3/4"=1'-0"

No.	Date	Issues/Revisions
26	JAN 2017	REVISIONS AS BUBBLED
02	DEC 2017	REVISIONS AS BUBBLED
11	NOV 2017	CABINET PULLS REVISED
03	OCT 2017	ISSUE FOR COORDINATION
04	AUG 2017	FOR PRICING

**432 PARK, APT. 78B**  
432 PARK AVENUE, 61ST FLOOR NEW YORK, NY 10022



**KANG MODERN**  
architect + interior design

NEW YORK OFFICE  
304 Hudson Street, Suite 500  
New York, NY 10013  
T 212.462.2028  
F 212.462.4788

WSP Flack & Kurtz  
512 Seventh Avenue  
New York, NY 10018  
HDL.C. Architectural Lighting design  
10 East 30th Street, 5th Floor  
New York, NY 10016

M/E/P Engineers  
Tel: (212) 535-9600  
Lighting Designers  
Tel: (212) 535-7800

18248 SHEETS - SCALE IS FINAL WORKING SCALE  
 18249 SHEETS - SCALE IS 1/2"=1'-0"  
 18250 SHEETS - SCALE IS 1/2"=1'-0"  
 18251 SHEETS - INTS