
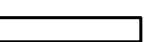

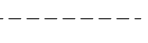

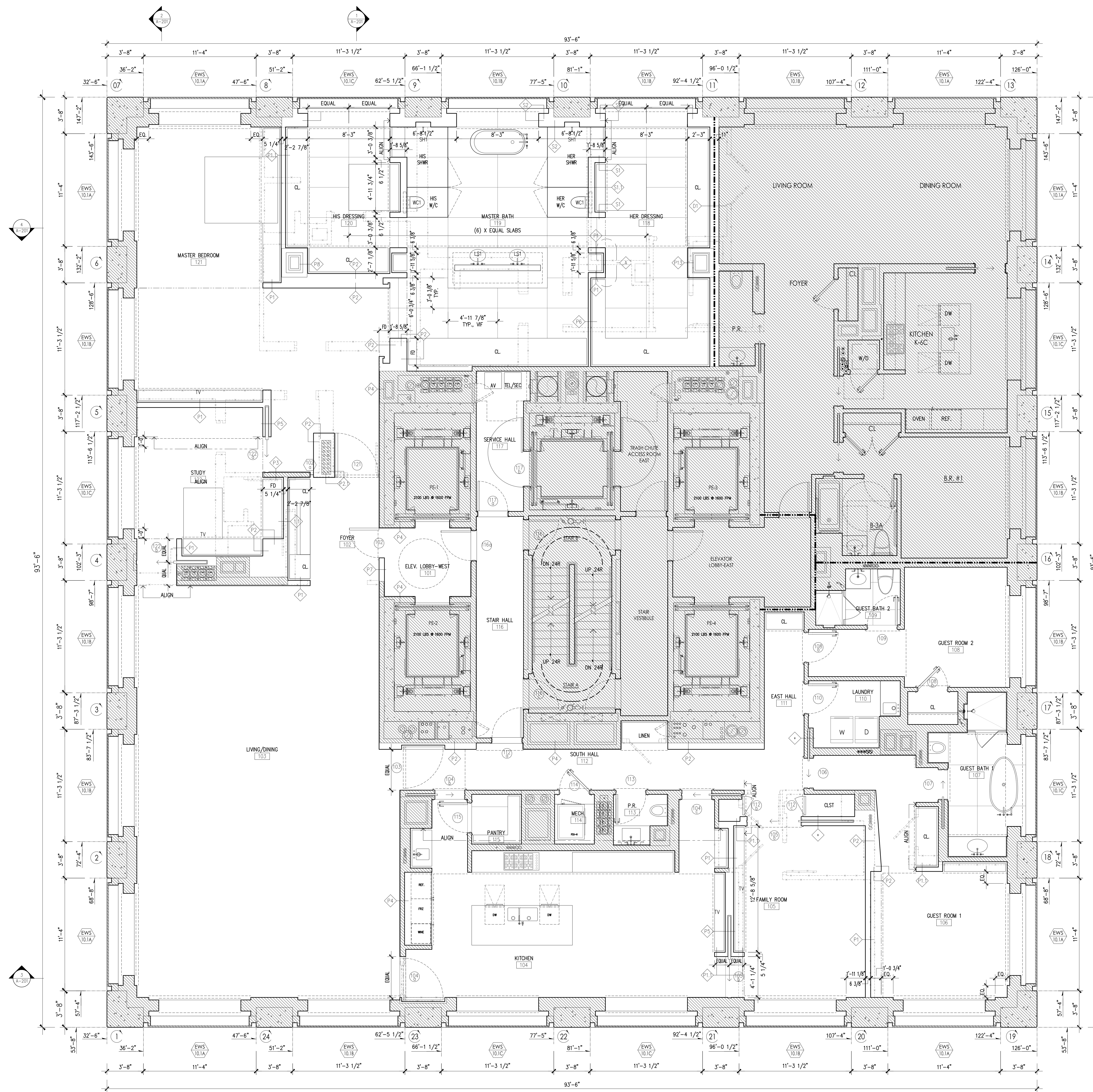


LEGEND

-  EXISTING CONSTRUCTION TO REMAIN
-  NEW CONSTRUCTION
-  EXISTING PARTITION OR DOOR TO BE REMOVED
-  CEILING HEIGHT TRANSITION ABOVE
-  DEMISING PARTITION

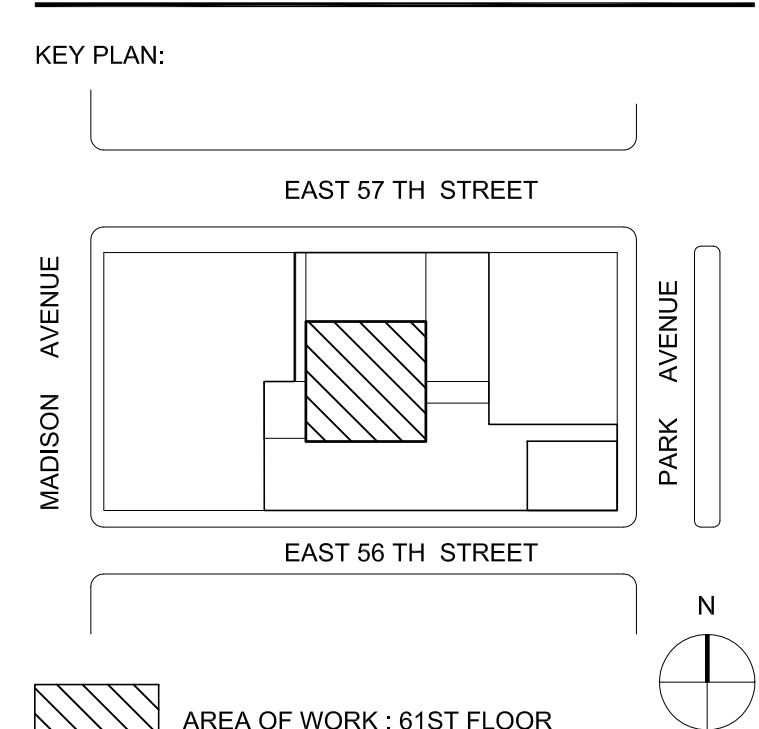
GENERAL NOTES

1. NEW CONSTRUCTION DETAILS AND METHODOLOGY MUST ACCOMMODATE BASE-BUILDING DIFFERENTIAL MOVEMENT SO AS TO AVOID THE ACCUMULATION OF EXCESSIVE STRESS WITHIN OR BETWEEN BUILDING COMPONENTS LEADING TO UNANTICIPATED DEFORMATION OR MOVEMENT BETWEEN PARTS. WHERE MOVEMENT IS EXPECTED BETWEEN COMPONENT PARTS, PRECAUTIONS SHALL BE TAKEN TO ISOLATE THE PARTS SO THAT MOVEMENT MAY OCCUR SMOOTHLY AND WITHOUT PERCEPTIBLE SOUND.



No.	Date	Issues/Revisions
11	SEP 2017	PROGRESS
15	AUG 2017	FOR PRICING
04	AUG 2017	FOR PRICING

432 PARK AVENUE, 61ST FLOOR
NEW YORK, NY 10022



KANG MODERN
ARCHITECTS + INTERIORS

NEW YORK OFFICE
304 Hudson Street, Suite 500
New York, NY 10013
T 212.462.2028
F 212.462.4788

WSP Flack & Kurtz
415 Seventh Avenue
New York, NY 10018
ME/P Engineers
Tel: (212) 535-9600

HDLC Architectural Lighting design
10 East 30th Street, 5th Floor
New York, NY 10016
Lighting Designers
Tel: (212) 535-7800

1824 SHEETS - SCALE: 1/4"=1'-0"
 1825 SHEETS - SCALE: 1/2"=1'-0"
 1826 SHEETS - SCALE: 1/2"=1'-0"
 1827 SHEETS - SCALE: 1/2"=1'-0"
 1828 SHEETS - SCALE: 1/2"=1'-0"
 1829 SHEETS - SCALE: 1/2"=1'-0"
 1830 SHEETS - SCALE: 1/2"=1'-0"
 1831 SHEETS - SCALE: 1/2"=1'-0"
 1832 SHEETS - SCALE: 1/2"=1'-0"
 1833 SHEETS - SCALE: 1/2"=1'-0"
 1834 SHEETS - SCALE: 1/2"=1'-0"
 1835 SHEETS - SCALE: 1/2"=1'-0"
 1836 SHEETS - SCALE: 1/2"=1'-0"
 1837 SHEETS - SCALE: 1/2"=1'-0"
 1838 SHEETS - SCALE: 1/2"=1'-0"
 1839 SHEETS - SCALE: 1/2"=1'-0"
 1840 SHEETS - SCALE: 1/2"=1'-0"
 1841 SHEETS - SCALE: 1/2"=1'-0"
 1842 SHEETS - SCALE: 1/2"=1'-0"
 1843 SHEETS - SCALE: 1/2"=1'-0"
 1844 SHEETS - SCALE: 1/2"=1'-0"
 1845 SHEETS - SCALE: 1/2"=1'-0"
 1846 SHEETS - SCALE: 1/2"=1'-0"
 1847 SHEETS - SCALE: 1/2"=1'-0"
 1848 SHEETS - SCALE: 1/2"=1'-0"
 1849 SHEETS - SCALE: 1/2"=1'-0"
 1850 SHEETS - SCALE: 1/2"=1'-0"
 1851 SHEETS - SCALE: 1/2"=1'-0"
 1852 SHEETS - SCALE: 1/2"=1'-0"
 1853 SHEETS - SCALE: 1/2"=1'-0"
 1854 SHEETS - SCALE: 1/2"=1'-0"
 1855 SHEETS - SCALE: 1/2"=1'-0"
 1856 SHEETS - SCALE: 1/2"=1'-0"
 1857 SHEETS - SCALE: 1/2"=1'-0"
 1858 SHEETS - SCALE: 1/2"=1'-0"
 1859 SHEETS - SCALE: 1/2"=1'-0"
 1860 SHEETS - SCALE: 1/2"=1'-0"
 1861 SHEETS - SCALE: 1/2"=1'-0"
 1862 SHEETS - SCALE: 1/2"=1'-0"
 1863 SHEETS - SCALE: 1/2"=1'-0"
 1864 SHEETS - SCALE: 1/2"=1'-0"
 1865 SHEETS - SCALE: 1/2"=1'-0"
 1866 SHEETS - SCALE: 1/2"=1'-0"
 1867 SHEETS - SCALE: 1/2"=1'-0"
 1868 SHEETS - SCALE: 1/2"=1'-0"
 1869 SHEETS - SCALE: 1/2"=1'-0"
 1870 SHEETS - SCALE: 1/2"=1'-0"
 1871 SHEETS - SCALE: 1/2"=1'-0"
 1872 SHEETS - SCALE: 1/2"=1'-0"
 1873 SHEETS - SCALE: 1/2"=1'-0"
 1874 SHEETS - SCALE: 1/2"=1'-0"
 1875 SHEETS - SCALE: 1/2"=1'-0"
 1876 SHEETS - SCALE: 1/2"=1'-0"
 1877 SHEETS - SCALE: 1/2"=1'-0"
 1878 SHEETS - SCALE: 1/2"=1'-0"
 1879 SHEETS - SCALE: 1/2"=1'-0"
 1880 SHEETS - SCALE: 1/2"=1'-0"
 1881 SHEETS - SCALE: 1/2"=1'-0"
 1882 SHEETS - SCALE: 1/2"=1'-0"
 1883 SHEETS - SCALE: 1/2"=1'-0"
 1884 SHEETS - SCALE: 1/2"=1'-0"
 1885 SHEETS - SCALE: 1/2"=1'-0"
 1886 SHEETS - SCALE: 1/2"=1'-0"
 1887 SHEETS - SCALE: 1/2"=1'-0"
 1888 SHEETS - SCALE: 1/2"=1'-0"
 1889 SHEETS - SCALE: 1/2"=1'-0"
 1890 SHEETS - SCALE: 1/2"=1'-0"
 1891 SHEETS - SCALE: 1/2"=1'-0"
 1892 SHEETS - SCALE: 1/2"=1'-0"
 1893 SHEETS - SCALE: 1/2"=1'-0"
 1894 SHEETS - SCALE: 1/2"=1'-0"
 1895 SHEETS - SCALE: 1/2"=1'-0"
 1896 SHEETS - SCALE: 1/2"=1'-0"
 1897 SHEETS - SCALE: 1/2"=1'-0"
 1898 SHEETS - SCALE: 1/2"=1'-0"
 1899 SHEETS - SCALE: 1/2"=1'-0"
 1900 SHEETS - SCALE: 1/2"=1'-0"
 1901 SHEETS - SCALE: 1/2"=1'-0"
 1902 SHEETS - SCALE: 1/2"=1'-0"
 1903 SHEETS - SCALE: 1/2"=1'-0"
 1904 SHEETS - SCALE: 1/2"=1'-0"
 1905 SHEETS - SCALE: 1/2"=1'-0"
 1906 SHEETS - SCALE: 1/2"=1'-0"
 1907 SHEETS - SCALE: 1/2"=1'-0"
 1908 SHEETS - SCALE: 1/2"=1'-0"
 1909 SHEETS - SCALE: 1/2"=1'-0"
 1910 SHEETS - SCALE: 1/2"=1'-0"
 1911 SHEETS - SCALE: 1/2"=1'-0"
 1912 SHEETS - SCALE: 1/2"=1'-0"
 1913 SHEETS - SCALE: 1/2"=1'-0"
 1914 SHEETS - SCALE: 1/2"=1'-0"
 1915 SHEETS - SCALE: 1/2"=1'-0"
 1916 SHEETS - SCALE: 1/2"=1'-0"
 1917 SHEETS - SCALE: 1/2"=1'-0"
 1918 SHEETS - SCALE: 1/2"=1'-0"
 1919 SHEETS - SCALE: 1/2"=1'-0"
 1920 SHEETS - SCALE: 1/2"=1'-0"
 1921 SHEETS - SCALE: 1/2"=1'-0"
 1922 SHEETS - SCALE: 1/2"=1'-0"
 1923 SHEETS - SCALE: 1/2"=1'-0"
 1924 SHEETS - SCALE: 1/2"=1'-0"
 1925 SHEETS - SCALE: 1/2"=1'-0"
 1926 SHEETS - SCALE: 1/2"=1'-0"
 1927 SHEETS - SCALE: 1/2"=1'-0"
 1928 SHEETS - SCALE: 1/2"=1'-0"
 1929 SHEETS - SCALE: 1/2"=1'-0"
 1930 SHEETS - SCALE: 1/2"=1'-0"
 1931 SHEETS - SCALE: 1/2"=1'-0"
 1932 SHEETS - SCALE: 1/2"=1'-0"
 1933 SHEETS - SCALE: 1/2"=1'-0"
 1934 SHEETS - SCALE: 1/2"=1'-0"
 1935 SHEETS - SCALE: 1/2"=1'-0"
 1936 SHEETS - SCALE: 1/2"=1'-0"
 1937 SHEETS - SCALE: 1/2"=1'-0"
 1938 SHEETS - SCALE: 1/2"=1'-0"
 1939 SHEETS - SCALE: 1/2"=1'-0"
 1940 SHEETS - SCALE: 1/2"=1'-0"
 1941 SHEETS - SCALE: 1/2"=1'-0"
 1942 SHEETS - SCALE: 1/2"=1'-0"
 1943 SHEETS - SCALE: 1/2"=1'-0"
 1944 SHEETS - SCALE: 1/2"=1'-0"
 1945 SHEETS - SCALE: 1/2"=1'-0"
 1946 SHEETS - SCALE: 1/2"=1'-0"
 1947 SHEETS - SCALE: 1/2"=1'-0"
 1948 SHEETS - SCALE: 1/2"=1'-0"
 1949 SHEETS - SCALE: 1/2"=1'-0"
 1950 SHEETS - SCALE: 1/2"=1'-0"
 1951 SHEETS - SCALE: 1/2"=1'-0"
 1952 SHEETS - SCALE: 1/2"=1'-0"
 1953 SHEETS - SCALE: 1/2"=1'-0"
 1954 SHEETS - SCALE: 1/2"=1'-0"
 1955 SHEETS - SCALE: 1/2"=1'-0"
 1956 SHEETS - SCALE: 1/2"=1'-0"
 1957 SHEETS - SCALE: 1/2"=1'-0"
 1958 SHEETS - SCALE: 1/2"=1'-0"
 1959 SHEETS - SCALE: 1/2"=1'-0"
 1960 SHEETS - SCALE: 1/2"=1'-0"
 1961 SHEETS - SCALE: 1/2"=1'-0"
 1962 SHEETS - SCALE: 1/2"=1'-0"
 1963 SHEETS - SCALE: 1/2"=1'-0"
 1964 SHEETS - SCALE: 1/2"=1'-0"
 1965 SHEETS - SCALE: 1/2"=1'-0"
 1966 SHEETS - SCALE: 1/2"=1'-0"
 1967 SHEETS - SCALE: 1/2"=1'-0"
 1968 SHEETS - SCALE: 1/2"=1'-0"
 1969 SHEETS - SCALE: 1/2"=1'-0"
 1970 SHEETS - SCALE: 1/2"=1'-0"
 1971 SHEETS - SCALE: 1/2"=1'-0"
 1972 SHEETS - SCALE: 1/2"=1'-0"
 1973 SHEETS - SCALE: 1/2"=1'-0"
 1974 SHEETS - SCALE: 1/2"=1'-0"
 1975 SHEETS - SCALE: 1/2"=1'-0"
 1976 SHEETS - SCALE: 1/2"=1'-0"
 1977 SHEETS - SCALE: 1/2"=1'-0"
 1978 SHEETS - SCALE: 1/2"=1'-0"
 1979 SHEETS - SCALE: 1/2"=1'-0"
 1980 SHEETS - SCALE: 1/2"=1'-0"
 1981 SHEETS - SCALE: 1/2"=1'-0"
 1982 SHEETS - SCALE: 1/2"=1'-0"
 1983 SHEETS - SCALE: 1/2"=1'-0"
 1984 SHEETS - SCALE: 1/2"=1'-0"
 1985 SHEETS - SCALE: 1/2"=1'-0"
 1986 SHEETS - SCALE: 1/2"=1'-0"
 1987 SHEETS - SCALE: 1/2"=1'-0"
 1988 SHEETS - SCALE: 1/2"=1'-0"
 1989 SHEETS - SCALE: 1/2"=1'-0"
 1990 SHEETS - SCALE: 1/2"=1'-0"
 1991 SHEETS - SCALE: 1/2"=1'-0"
 1992 SHEETS - SCALE: 1/2"=1'-0"
 1993 SHEETS - SCALE: 1/2"=1'-0"
 1994 SHEETS - SCALE: 1/2"=1'-0"
 1995 SHEETS - SCALE: 1/2"=1'-0"
 1996 SHEETS - SCALE: 1/2"=1'-0"
 1997 SHEETS - SCALE: 1/2"=1'-0"
 1998 SHEETS - SCALE: 1/2"=1'-0"
 1999 SHEETS - SCALE: 1/2"=1'-0"
 2000 SHEETS - SCALE: 1/2"=1'-0"