

LEGEND

SYMBOL	DESCRIPTION
	WOOD CEILING SYSTEM BY ARMSTRONG, WOODWORKS GRILLE IN CUSTOM STAINED COLOR TO MATCH MKDA SAMPLE.
	FELT GRID SYSTEM BY MDC, ZINTRA BAFFLES, STANDARD PROFILE, PEWTER COLOR
	AXIS LED BEAM 2 PENDANT IN BLACK TB20LED-1000LM-90-30K-SO-F-BLK-UNV-DP
	EUREKA LED PENDANT, CYCLE 4800-36 ANTHRACITE FINISH 4800-36-LED-30L-48V7-DVS6-36-RC-BLK-CHR-BLKA
	GLOBAL LIGHTING, THE BELL PENDANT, MATTE BURGUNDY QURG GU24 A19 11WATT LED LAMP
	PENDANT BY EUREKA VOXEL 4064 BLACK FINISH 4064-8WLED-30L-48V7-DVS6-36-RC-BLK-CHR-BLKA
	UNDERCABINET LED STRIP LIGHT BY PICASSO LIGHTING, CATALINA, OR APPROVED EQUAL CAT-CL-250-30K-60MC-SM1Z-T4
	INDICATE CEILING TYPE: ACT-ACOUSTICAL CEILING TILE/ GYP.-GYPSUM BO. CEILING HEIGHT.
	ATLITE MARATHON SERIES EDGE LIT. SHADING INDICATES ILLUMINATED. LOCATE ON CENTER OF TILE AND CLEAR DOOR SWING. ARROW INDICATES EGRESS DIRECTION. PROVIDE STEM OR WALL MTD AS REQ'D. VERIFY FINAL LOCATION IN FIELD.

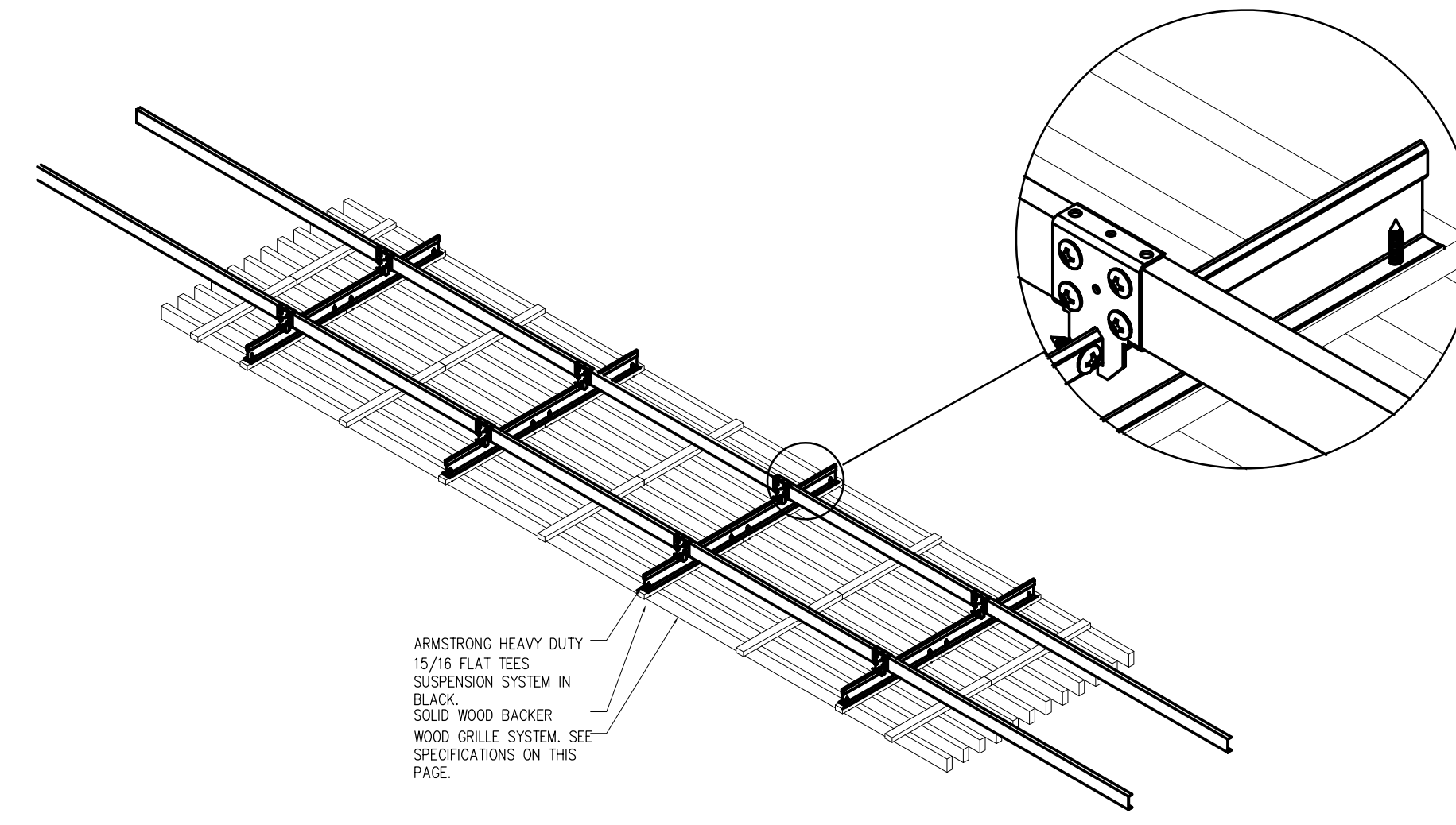
REFER TO SHEET A-702 FOR LIGHTING SCHEDULE.

REFLECTED CEILING NOTES

- CONTRACTOR SHALL VERIFY EXISTING CONDITIONS AND COORDINATE PROPOSED NEW CEILING WORKSCOPE. CEILING HEIGHTS ARE TO BE VERIFIED IN FIELD AND COORDINATED WITH MECHANICAL SYSTEM(S) AND ENGINEERING DOCUMENTS. REPORT DISCREPANCIES AND CONFLICTS WITH MKDA PRIOR TO ANY INSTALLATION.
- MECHANICAL CONTRACTOR MUST SUBMIT ALL SHOP DRAWINGS TO ARCHITECT FOR APPROVAL BY MECHANICAL ENGINEER PRIOR TO FABRICATION.
- AIR CONDITIONING DIFFUSERS, SPRINKLER HEADS, REGISTERS, RETURN-AIR GRILLES, EXHAUST FANS AND ACCESS PANELS SHALL BE SIZED AND LOCATED BY HVAC ENGINEER AND SUBMITTED TO ARCHITECT VIA SHOP DRAWINGS & CUT SHEETS FOR APPROVAL PRIOR TO FABRICATION AND INSTALLATION.
- INTERIOR SPACES SHALL BE MECHANICALLY VENTILATED IN ACCORDANCE WITH ADMINISTRATIVE CODE. PLANS SHOWING MECHANICAL VENTILATION SYSTEM WILL BE FILED IN ACCORDANCE WITH THE RULES OF THE DEPARTMENT OF BUILDINGS, OPENINGS AND GRILLE LOCATIONS AND SIZES SHALL BE DETERMINED BY THE ENGINEER AND APPROVED BY ARCHITECT PRIOR TO INSTALLATION.
- ALL HVAC DIFFUSERS AND REGISTERS IN ALL AREAS SHALL BE SET AS PER ARCHITECT'S REFLECTED CEILING PLAN OR AS PER REVISED AND/OR APPROVED SHOP DRAWINGS. GENERAL CONTRACTOR TO NOTIFY ARCHITECT OF ANY DISCREPANCIES BETWEEN SHOP DRAWINGS AND ARCHITECT'S PLANS PRIOR TO INSTALLATION OF LIGHTS AND CEILINGS.
- CEILINGS IN CLOSETS SHALL BE OF SAME HEIGHT AND CONSTRUCTION AS THAT OF ADJOINING SPACE, EXCEPT AS OTHERWISE NOTED.
- PROVIDE THE NECESSARY FRAMING AND/OR BLACK IRON TO PROVIDE THE CEILING HEIGHTS AS SHOWN ON DRAWINGS.
- PROVIDE ALL NECESSARY FIRE-PROOFING, FIRE STOPPING AND SMOKE SEALANT AT EXPOSED CEILING SLAB AND CORE WALLS AND ANY NEW RATED PARTITIONS.
- CEILING CONTRACTOR TO INSTALL FIRE-RETARDANT WOOD BLOCKING ABOVE SUSPENDED CEILING AS REQUIRED TO RECEIVE SURFACE MOUNTED CURTAIN AND BLIND TRACKS AND CEILING SUPPORTED ASSEMBLIES (I.E., PROJECTORS) WHERE NOTED ON FINISH PLAN, GLASS WALLS AS SHOWN ON CONSTRUCTION PLAN AND CABINETWORK REQUIREMENTS.
- GENERAL CONTRACTOR SHALL PROVIDE AND INSTALL SHALLOW DEPTH FIXTURES AS FIELD CONDITIONS NECESSITATE. G.C. TO VERIFY WITH ARCHITECT PRIOR TO ANY CHANGES.
- INSTALL ALL SWITCHES AT 3'-2" A.F.F. TO CENTERLINE U.O.N. SWITCHES ABOVE 3'-0" HIGH COUNTERS SHALL BE INSTALLED AT 3'-8" A.F.F.
- ALL SWITCHING TO BE STRAIGHT LINED GANGED TOGETHER WHEREVER POSSIBLE.
- THERMOSTAT(S) ARE TO BE CENTERED OVER SWITCH PLATES WHERE APPLICABLE AND MOUNTED AT 48" A.F.F. TO CENTERLINE. SEE DETAIL 3/A-306.00
- OMIT NOTE
- ALL DOWNLIGHTS AND SPRINKLERS TO BE CENTERED ON CEILING TILES, U.O.N.
- OMIT NOTE
- CONTRACTOR TO PROVIDE NIGHT LIGHTS AND EMERGENCY LIGHTS AS REQUIRED BY CODE AS PER ENGINEERING DRAWINGS.
- NOTE: ELECTRICAL WORK IS NOT FILED UNDER THIS APPLICATION.
- OMIT NOTE
- ALL NEW CEILING GRID FIELDS ARE CENTERED IN ROOM (U.O.N.) CONTRACTOR TO MAXIMIZE CEILING HEIGHTS IN INTERIOR SPACES. MAINTAIN AN 8'-0" A.F.F. MINIMUM (U.O.N.). SEE ENGINEERING DRAWINGS.
- CONTRACTOR TO VERIFY, COORDINATE AND PROVIDE SWITCHING AS REQUIRED TO ACHIEVE PROPER CIRCUITING. EACH AREA/ROOM WILL HAVE ONE LOCATION FOR SWITCHES (U.O.N.).
- CONTRACTOR SHALL CAULK ALL CEILING MOLDING/PARTITION JOINTS PRIOR TO PAINTING OPERATIONS.
- OMIT NOTE
- CONTRACTOR SHALL COORDINATE LOCATION OF DUCTWORK, SPRINKLER PIPING, ETC. WITH ALL OVERHEAD CONDUITS, PIPING, UTILITY LINES & FIXTURES, ETC. & PROVIDE COORDINATED SHOP DRAWING FOR DUCTWORK & CEILING LAYOUT.
- CONTRACTOR SHALL RELOCATE AND/OR RE-ROUTE EXISTING REMAINING DUCTWORK AND/OR CONDUIT, SPRINKLER PIPING ETC. AS REQUIRED TO AVOID CONFLICTS WITH NEW CEILING ASSEMBLY INCLUDING LIGHT FIXTURES.
- ALL GYPSUM BOARD CEILING, SOFFITS AND HEADERS ARE TO BE PAINTED WITH P-2, U.O.N. - SEE FINISH PLAN.
- CONTRACTOR SHALL PAINT ALL NEW AND EXISTING REMAINING BLIND POCKET ASSEMBLIES - TYPICAL.
- ALL SWITCH, DIMMER AND OUTLET COVER PLATES SHALL BE WHITE.
- ALL ELECTRICAL DEVICES TO BE DECORA-SERIES, COLOR TO BE WHITE.
- OMIT NOTE
- GENERAL CONTRACTOR TO PROVIDE A BALANCING REPORT AND TEMPERATURE REPORT SHOWING ALL VELOCITIES AND TEMPERATURES OF ALL AIR DIFFUSERS. THIS BALANCING REPORT SHALL BE PREPARED BY AN INDEPENDENT BALANCING COMPANY APPROVED BY THE 'INDEPENDENT AIR BALANCING COUNCIL'. REPORT TO BE PROVIDED TO ARCHITECT & OWNER.

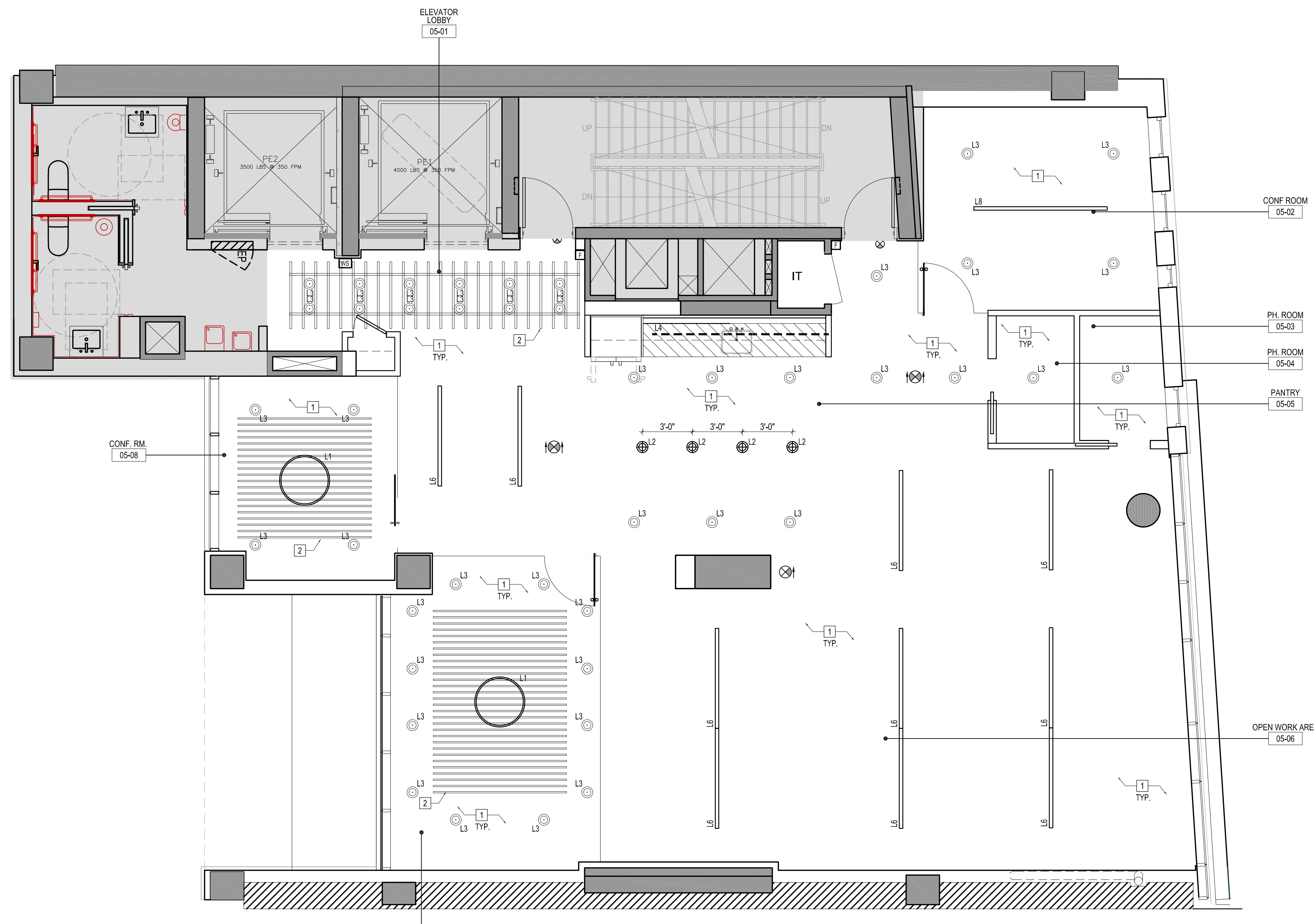
REFLECTED CEILING PLAN KEYED NOTES:

- PAINT ENTIRE CEILING DECK, DUCTS, PIPES, CONDUITS, HANGERS, ETC. AS PER FINISH SCHEDULE.
- INSTALL CEILING GRID SYSTEM AS PER MFR'S. RECOMMENDATION.
- INSTALL GLUE APPLIED BLAC ACT TILES TO CONCRETE DECK



A DETAIL "A"
SCALE: 3/4" = 1'-0"

© 2018 MKDA, INC.
These plans are the sole property of MILO KLEINBERG DESIGN ASSOCIATES, INC. Use without permission is strictly forbidden and will result in the initiation of legal proceedings.



1 REFLECTED CEILING PLAN
SCALE: 1/4" = 1'-0"

LIGHT FIXTURE SCHEDULE

LIGHT INFORMATION

LIGHT FIXTURE SYMBOL	QUANTITIES	DESCRIPTION	LOCATION	COLOR TEMP	LAMP TYPE	WATTS /FIXTURE	LIGHT FIXTURE CONTROL	VOLTAGE	BALLAST/ DRIVER
	AS SHOWN	PENDANT LIGHT FIXTURE MANUF: EUREKA MODEL: CYCLE 4800-36 COLOR: ANTHRACITE SIZE: 36" DIA	CONF. RM.					UNV	
	AS SHOWN	PENDANT LIGHT FIXTURE MANUF: EUCLID PENDANT LAMP, BLACK/GOLD 12" DIA.	PANTRY		INCAND	40W	VACANCY/ TIME CLOCK	UNV	
	AS SHOWN	PENDANT LIGHT FIXTURE MANUF: EUREKA MODEL: VOXEL 4064 COLOR: BLACK SIZE:	ELEV. LOBBY & CORRIDOR						
	AS SHOWN	LED TAPE LIGHT FIXTURE MANUF.: WAC LIGHTING MODEL: IMBILED PRO 3 FINISH: WHITE LENGTH: TBD	PANTRY	3000K	LED			24V	
	AS SHOWN	PENDANT LIGHT FIXTURE MANUF: AXIS MODEL: AXIS BEAM 2 ORDER #: TB20LED UPON UPON LED COLOR: BLACK SIZE: 8'-0" LENGTH	OPEN AREA	3500K	LED		VACANCY/ TIME CLOCK	UNV	

05.28.19	ISSUED FOR BACKGROUNDS
DATE	REVISIONS
 MILO KLEINBERG DESIGN ASSOCIATES, INC. 902 BROADWAY, NEW YORK, NY 10010. TELE 212 532-9800 FAX 212 889-2180	
ARCHITECT OF RECORD:	JOHN F. GIUSEFFI, ARCHITECT, PC. 902 BROADWAY, 17th FL., NEW YORK, NY. 212.532.9800
PROJECT	809 Broadway New York, NY 5th Floor
DRAWING TITLE	REFLECTED CEILING PLAN & LIGHTING SPECIFICATIONS
SEAL & SIGNATURE	DATE: 05.28.19
	PROJECT NUMBER: 0387-3
	WORKING DWG. BY: AW/JG
	DRAWING No. A-205.00
NYC DOB NUMBER (PLACE STICKER HERE)	